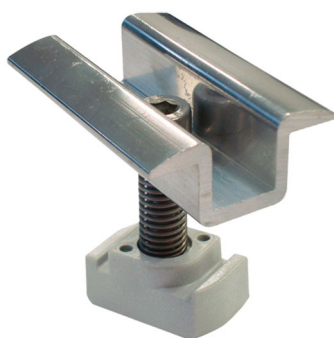


HSCP/60

pre-assembled central clamp

- cod. 11110810 - cod. 11110810BOX - cod. 11110811
- cod. 11110811BOX - cod. 11110812 - cod. 11110812BOX



DIMENSIONS:

CODE	For panels H [mm]
11110810	30-32-34
11110810BOX	30-32-34
11110811	35-36-38
11110811BOX	35-36-38
11110812	40-42-44
11110812BOX	40-42-44

TECHNICAL SPECIFICATIONS:

- Material: aluminium alloy 6060
- Bracket length: 60mm
- A2 stainless steel screws and spring
- Acetal copolymer slider with Geomet® treatment steel plate
- M8 thread
- Supplied pre-assembled
- Available for panels from 30 mm to 44 mm
- Screw tightening with hex key 6
- Non-slip knurling

ITEMS

CODE	DESCRIPTION
11110810	PRE-ASSEMBLED CENTRAL BRACKET MOD HSCP/60 1
11110810BOX	PRE-ASSEMBLED CENTRAL BRACKET MOD HSCP/60 1 - BOX 50 pcs
11110811	PRE-ASSEMBLED CENTRAL BRACKET MOD HSCP/60 2
11110811BOX	PRE-ASSEMBLED CENTRAL BRACKET MOD HSCP/60 2 - BOX 50 pcs
11110812	PRE-ASSEMBLED CENTRAL BRACKET MOD HSCP/60 3
11110812BOX	PRE-ASSEMBLED CENTRAL BRACKET MOD HSCP/60 3 - BOX 50 pcs

All rights relating to this publication are the exclusive property of Tecnosystemi SpA.
 Tecnosystemi SpA reserves the right to make changes at any time and without notice, for technical or commercial needs.