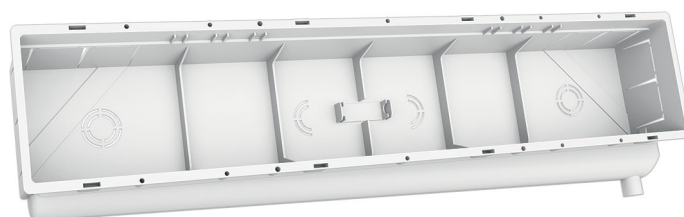


FLAT CLASSIC

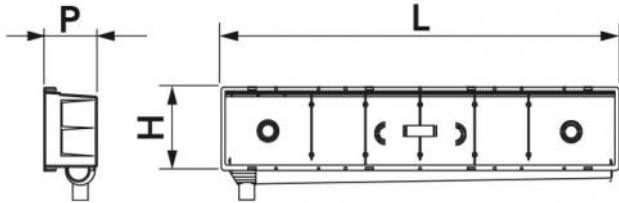
built-in installation box

- cod. 11100094



TECHNICAL SPECIFICATIONS:

- Right/left reversible tilted rear conveyor with \varnothing 20 vertical coupling
- Protection grille
- Anti-plaster cardboard
- Interlocking cover or with screws



DIMENSIONS

CODE	L [mm]	H [mm]	P [mm]
11100094	520	100	65

PACK COMPLETE WITH

- 1 preparation box with built-in level
- 1 Interlocking lid
- Anti-plaster cardboard

ITEMS

CODE	DESCRIPTION
11100094	FLAT CLASSIC READY-TO-PLUMB ENCLOSURE WITH SNAP-ON COVER

All rights relating to this publication are the exclusive property of Tecnosystemi SpA.
 Tecnosystemi SpA reserves the right to make changes at any time and without notice, for technical or commercial needs.