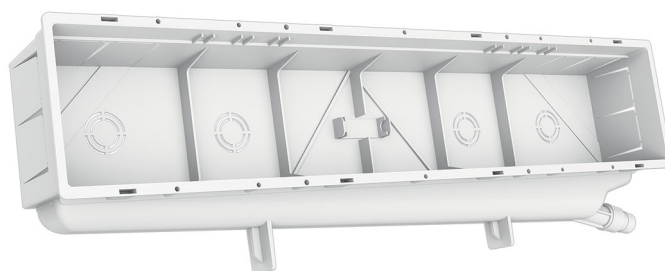


# PROFESSIONAL CLASSIC

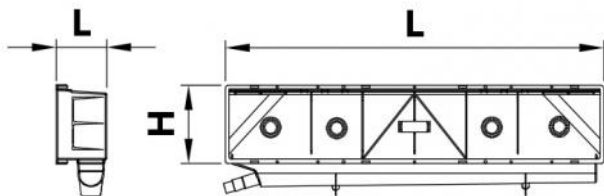
built-in installation box

- cod. 11100095 - cod. 11100095V



## TECHNICAL SPECIFICATIONS:

- Right/left reversible tilted rear conveyor with multiple side coupling  $\varnothing 16 - \varnothing 20$
- Protection grille
- Anti-plaster cardboard
- Interlocking cover or with screws



## DIMENSIONS

CODE	L [mm]	H [mm]	P [mm]
11100095	520	100	65
11100095V	520	100	65

## COMBINATIONS WITH CONDENSATE DRAIN PIPES IN THE CATALOGUE:

Pipe 18/20 Art.11126346 (direct connection)

Pipe 18/20 Art.11126320 (direct connection)

TCR-21 rigid tube (using the MP-TCR-21)

## PACK COMPLETE WITH

- 1 preparation box with built-in level
- 1 Interlocking lid
- Anti-plaster cardboard

## ITEMS

CODE	DESCRIPTION
11100095	PROFESSIONAL-CLASSIC READY-TO-PLUMB ENCLOSURE WITH SNAP-ON COVER
11100095V	PROFESSIONAL-CLASSIC READY-TO-PLUMB ENCLOSURE WITH COVER AND SCREWS

All rights relating to this publication are the exclusive property of Tecnosystemi SpA.  
Tecnosystemi SpA reserves the right to make changes at any time and without notice, for technical or commercial needs.