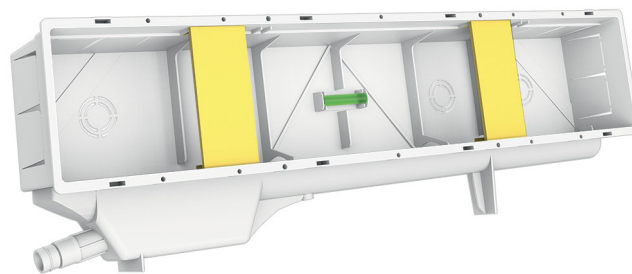


PROFESSIONAL ELITE

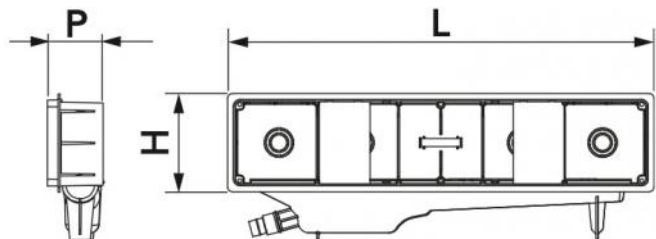
built-in installation box with siphon

- cod. 11100117 - cod. 11100117V



TECHNICAL SPECIFICATIONS:

- Right/left reversible tilted rear conveyor with multiple side coupling $\varnothing 16$ - $\varnothing 20$
- Protection grille
- Adjustable template fastening plates
- Built-in spirit level
- Built-in siphon with hermetic cover
- Anti-condensation cavity
- Anti-plaster cardboard
- Interlocking cover or with screws



DIMENSIONS

CODE	L [mm]	H [mm]	P [mm]
11100117	520	100	65
11100117V	520	100	65

PACK COMPLETE WITH

- 1 preparation box with built-in level
- 1 Interlocking cover with holes for screws
- 1 siphon complete with closure plug + non-return valve
- 2 template fixing brackets
- 4 fixing screws for lid
- Anti-plaster cardboard

COMBINATIONS WITH CONDENSATE DRAIN PIPES IN THE CATALOGUE:

Pipe 18/20 Art.11126346 (direct connection)

Pipe 18/20 Art.11126320 (direct connection)

TCR-21 rigid tube (using the MP-TCR-21)

ITEMS

CODE	DESCRIPTION
11100117	PROFESSIONAL-ELITE READY-TO-PLUMB ENCLOSURE WITH TRAP AND SNAP-ON COVER
11100117V	PROFESSIONAL-ELITE READY-TO-PLUMB ENCLOSURE WITH TRAP AND COVER WITH SCREWS

All rights relating to this publication are the exclusive property of Tecnosystemi SpA.
 Tecnosystemi SpA reserves the right to make changes at any time and without notice, for technical or commercial needs.