

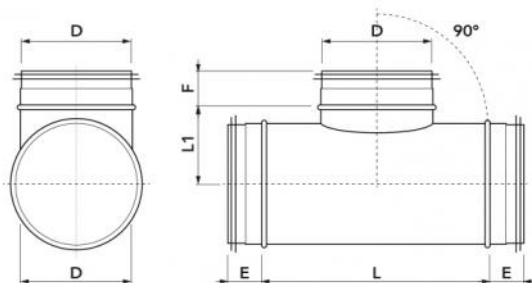
90° symmetrical shunt

- cod. 31500370 - cod. 31500380 - cod. 31500390
- cod. 31500400 - cod. 31500410 - cod. 31500420
- cod. 31500422 - cod. PWC500042 - cod. 31500424
- cod. 31500426



TECHNICAL SPECIFICATIONS:

- Made of galvanized steel
- With double lip EPDM gasket



DIMENSIONS

CODE	D [mm]	E [mm]	F [mm]	L [mm]	L1 [mm]	WEIGHT [kg]
31500370	75	36	36	140	52	0,40
31500380	90	36	36	160	65	0,45
31500390	120	36	36	190	83	0,63
31500400	160	36	36	230	105	0,85
31500410	195	45	30	320	125	1,28
31500420	250	55	55	307	150	2,00
31500422	300	36		370	175	2,56
PWC500042	310	55	55	420	182	2,80
31500424	355	55		425	203	3,69
31500426	400	55		520	225	5,00

ITEMS

CODE	DESCRIPTION
31500370	SYMMETRIC JUNCTION 90° Ø 80
31500380	SYMMETRIC JUNCTION 90° Ø 100
31500390	SYMMETRIC JUNCTION 90° Ø 125
31500400	SYMMETRIC JUNCTION 90° Ø 160
31500410	SYMMETRIC JUNCTION 90° Ø 200
31500420	SYMMETRIC JUNCTION 90° Ø 250
31500422	SYMMETRIC JUNCTION 90° Ø 300
PWC500042	SYMMETRIC JUNCTION 90° Ø 315
31500424	SYMMETRIC JUNCTION 90° Ø 355
31500426	SYMMETRIC JUNCTION 90° Ø 400

All rights relating to this publication are the exclusive property of Tecnosystemi SpA.
Tecnosystemi SpA reserves the right to make changes at any time and without notice, for technical or commercial needs.