

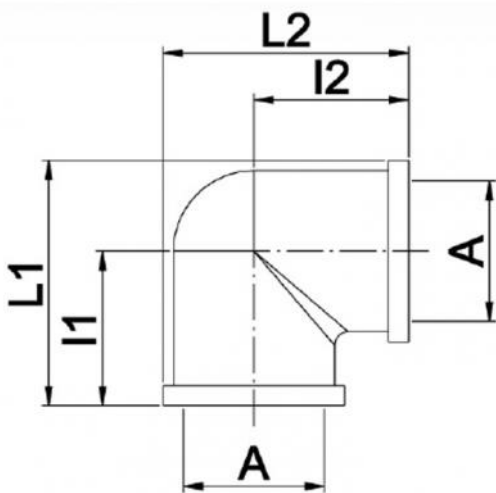
Curve F / F

- cod. 26002910 - cod. 26002920 - cod. 26002930
- cod. 26002940 - cod. 26002950



TECHNICAL SPECIFICATIONS:

- Made of brass
- Application in hydraulics
- Gas thread
- Maximum operating temperature +130°C



DIMENSIONS

| CODE | A | l1 [mm] | l2 [mm] | L1 [mm] | L2 [mm] |
|----------|--------|---------|---------|---------|---------|
| 26002910 | 1/2" | 25 | | 38 | |
| 26002920 | 3/4" | 31 | | 46,5 | |
| 26002930 | 1" | 36 | | 54 | |
| 26002940 | 1" 1/4 | 40,5 | | 65,5 | |
| 26002950 | 1" 1/2 | 46 | | 74 | |

ITEMS

| CODE | DESCRIPTION |
|----------|------------------------|
| 26002910 | CURVE FF 1/2" |
| 26002920 | 3/4" FF CURVE |
| 26002930 | BEND FF 1" (PACK OF 5) |
| 26002940 | CURVE FF 1"1/4 |
| 26002950 | CURVE FF 1"1/2 |

All rights relating to this publication are the exclusive property of Tecnosystemi SpA.
 Tecnosystemi SpA reserves the right to make changes at any time and without notice, for technical or commercial needs.