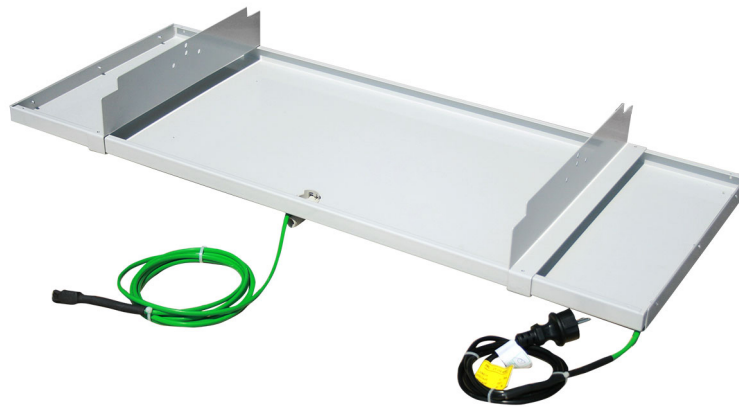


Condensate drain pan with heating Antifreeze cable for condensate drain pipes

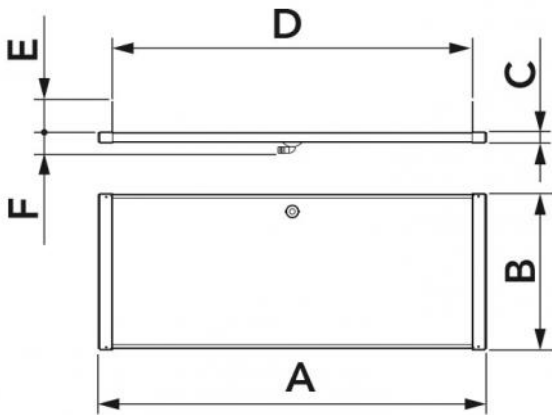
- cod. SCD300066 - cod. SCD300112 - cod. SCD300071
- cod. SCD300113 - cod. SCD300100 - cod. SCD300114
- cod. SCD300105 - cod. SCD300106



TECHNICAL SPECIFICATIONS:

- Electrogalvanised sheet
- Outdoor polyester coating in ivory or RAL 7016 gray
- Heating cable power 15 W/m
- Coupling for condensate drain pipe \varnothing 16 mm
- Power supply voltage 230 V
- Cable diameter 6 mm
- Resistance tolerance from -5% to +10%
- Built-in thermostat
- Connection at +3°C and disconnection at 12°C
- For outdoor units

EXAMPLE OF INSTALLATION:



DIMENSIONS

CODE	A [mm]	B [mm]	C [mm]	D [mm]	E [mm]	F [mm]
SCD300066	980	390	35	910 max.	80	52
SCD300112	980	390	35	911 max.	81	52
SCD300071	1100	550	35	1030 max.	130	52
SCD300113	1100	550	35	1031 max.	131	52
SCD300100	1400	550	35	1330 max.	130	52
SCD300114	1400	550	35	1331 max.	131	52
SCD300105	1500	550	35	1400 max.	130	52
SCD300106	1500	550	35	1400 max.	130	52

ITEMS

CODE	DESCRIPTION
SCD300066	LARGE CONDENSATE TRAY WITH FROST-PROTECT. LONG CABLE WITH THERMOSTAT
SCD300112	
SCD300071	MAXI CONDENSATE TRAY WITH FROST-PROTECT. LONG CABLE WITH THERMOSTAT
SCD300113	
SCD300100	IVORY CONDENSATE DRAIN PAN WITH ANTI-FREEZE CABLE 1400x550 MOD. BIG AND HEATING CABLE FOR CONDENSATE DRAIN PIPE
SCD300114	
SCD300105	
SCD300106	

All rights relating to this publication are the exclusive property of Tecnosystemi SpA.
 Tecnosystemi SpA reserves the right to make changes at any time and without notice, for technical or commercial needs.

