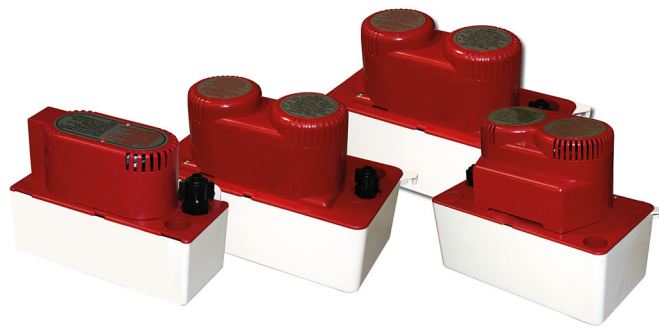


# TS 120 - 200 - 380 - 460

## centrifugal pump with condensate tank

- cod. 12170027 - cod. 12170013 - cod. 12170012  
- cod. 12170011

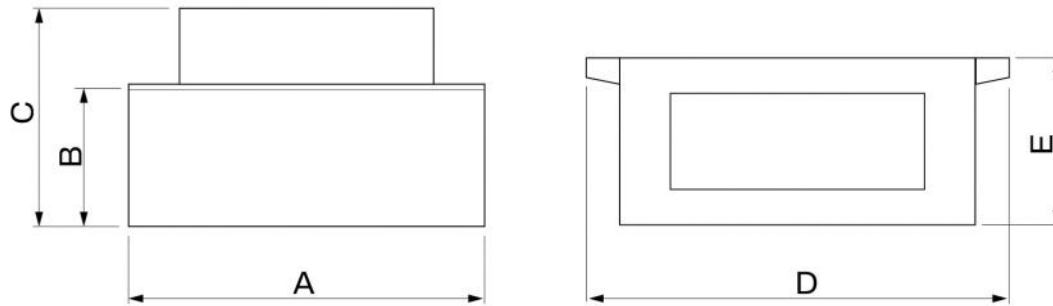


Water  
 TANK

## TECHNICAL SPECIFICATIONS:

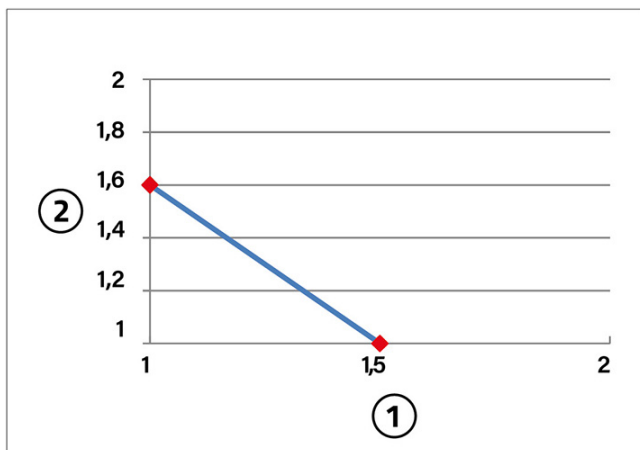
- Power supply 230V - 50Hz
- Protection rating IPX4
- Liquid limit temperature 43°C
- Built-in non-return valve
- Power cord length 1.7 m
- Exhaust pipe output 8 mm internal - 12 mm external
- Dual NC 24 V AC max alarm contact
- Impeller in plastic
- Rotary motor
- Equipped with 2 slots for wall mounting

## DIMENSIONS



CODE	A [mm]	B [mm]	C [mm]	D [mm]	E [mm]
12170027	170	60	118	170	73
12170013	255	88	180	285	128
12170012	255	88	180	285	128
12170011	275	110	225	305	153

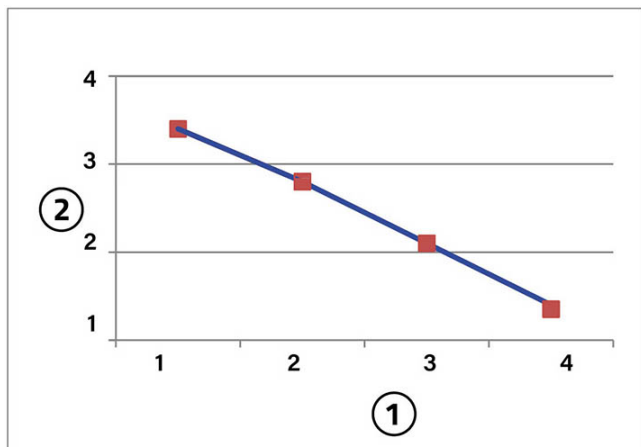
## TS 120



[1] Air delivery (vertical m)  
[2] Flow rate (liters/min)

- Max. 1,5 m vertical delivery
- Power consumption 28,3 W
- Max noise level 56 [dB(A)]
- Tank capacity 0.2 L
- Maximum capacity 120 L
- Input drain: no. 1 Ø 20
- Dimensions W 170 x H 115 x D 72 mm / 0,9 kg

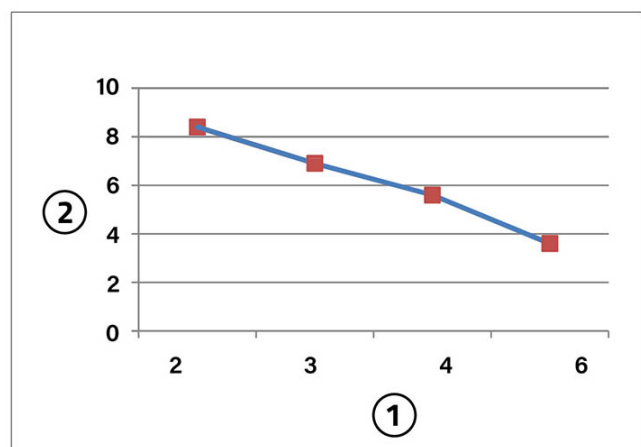
## TS 200



[1] Air delivery (vertical m)  
[2] Flow rate (liters/min)

- Max. 4 m vertical delivery
- Power consumption 30,8 W
- Max noise level 59 [dB(A)]
- Tank capacity 1.7 L
- Maximum capacity 200 L
- Input drain no. 3 Ø 29
- Dimensions W 282 x H 177 x D 127 mm / 1,8 kg

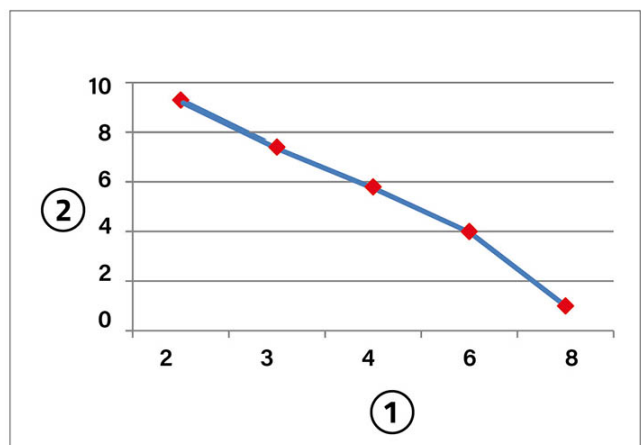
## TS 380



[1] Air delivery (vertical m)  
[2] Flow rate (liters/min)

- Max. 6 m vertical delivery
- Power consumption 147 W
- Max noise level 58 [dB(A)]
- Tank capacity 1.7 L
- Maximum capacity 380 L
- Input drain no. 3 Ø 29
- Dimensions W 282 x H 177 x D 127 mm / 2,1 kg

## TS 460



[1] Air delivery (vertical m)  
[2] Flow rate (liters/min)

- Max. 8 m vertical delivery
- Power consumption 88 W
- Max noise level 56 [dB(A)]
- Tank capacity 3 L
- Maximum capacity 460 L
- Input drain no. 4 Ø 29
- Dimensions W 302 x H 220 D 152 mm / 2.8 kg

## ASSEMBLY APPLICATIONS

- column air conditioners
- refrigerated cabinets
- refrigerated cabinets

- evaporators
- ceiling-mounted air conditioners
- condensation boilers

## ITEMS

CODE	DESCRIPTION
12170027	CENTRIFUGAL CONDENSATE TANK PUMPS MOD.TS120
12170013	CENTRIFUGAL CONDENSATE TANK PUMPS MOD. TS200
12170012	CENTRIFUGAL CONDENSATE TANK PUMPS MOD. TS380
12170011	CENTRIFUGAL CONDENSATE TANK PUMPS MOD. TS460

All rights relating to this publication are the exclusive property of Tecnosystemi SpA.  
Tecnosystemi SpA reserves the right to make changes at any time and without notice, for technical or commercial needs.

