

# HI-TECH PUR 4.0

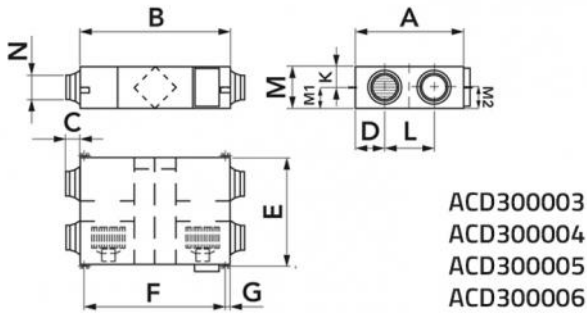
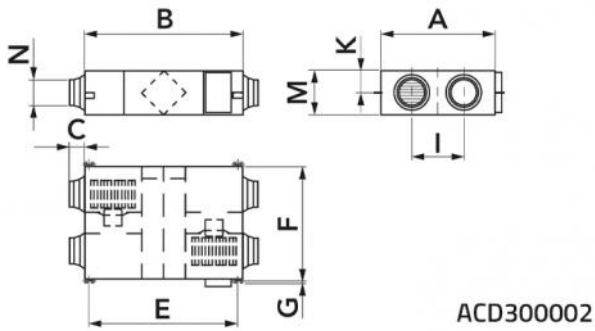
Enthalpic heat recovery unit ceiling-mounted ducted

- cod. ACD300003 - cod. ACD300004 - cod. ACD300005  
- cod. ACD300006



## TECHNICAL SPECIFICATIONS:

- For residential and non-residential applications
- Removable enthalpy heat exchanger pack
- Automatic by-pass
- Brushless EC motors
- Internal structure in EPS that prevents condensation and improves thermal insulation
- Backlit LCD digital remote control
- BMS compatible VIA RS485 modbus protocol
- ON/OFF remote control
- Silent function "sleep"
- Defrost Function
- Fire signal input
- Suitable for combination with electric heater
- Extractable filters G3
- Mounting brackets



## DIMENSIONS

CODE	MOD.	A [mm]	B [mm]	C [mm]	D [mm]	E [mm]	F [mm]	G [mm]	I [mm]	L [mm]	K [mm]	M [mm]	M1 [mm]	M2 [mm]	N [mm]
ACD300003	500 m <sup>3</sup> /h	902	867	107	197	833.5	922	20.5		451.5	115.5	280	193.5		Ø 194
ACD300004	800 m <sup>3</sup> /h	1134	1134	85	202	1068	1189	20.5		628	128	388	194		Ø 242
ACD300005	1000 m <sup>3</sup> /h	1243	1193	85	241	1173	1248	20.5		629.5	133	388	191	241	Ø 242
ACD300006	1300 m <sup>3</sup> /h	1243	1193	85	241	1173	1248	20.5		629.5	133	388	191	241	Ø 242

## TECHNICAL DATA

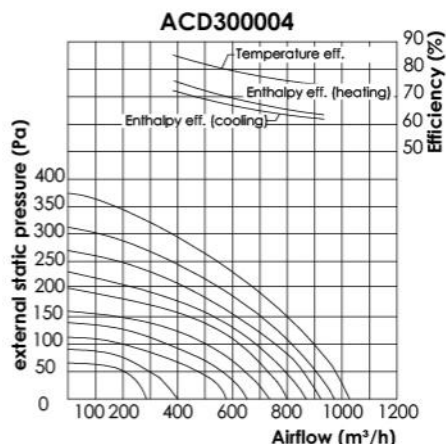
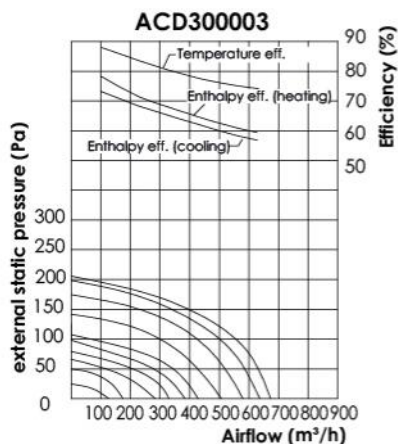
	MODELS	MODELS	MODELS	MODELS
	ACD300003	ACD300004	ACD300005	ACD300006
Flow rate [m³/h]	500	800	1000	1300
Flow rate [l/s]	139	222	278	361
External pressure [Pa]	120	150	150	90
Enthalpy efficiency - COOLING [%]	60-74	63-71	60-70	56-68
Enthalpy efficiency - HEATING [%]	63-78	65-75	62-72	59-70
Temp. efficiency [%]	76	76	76	73
Noise [dB(A)]	39	42	43	43
Power supply	220-240 V - 50 Hz -1 Ph	220-240 V - 50 Hz -1 Ph	220-240 V - 50 Hz -1 Ph	220-240 V - 50 Hz -1 Ph
Electrical power [W]	230	368	409	424
Power cable [mm²]	3x1,5	3x1,5	3x1,5	3x1,5
Control cable [mm²]	2x0,5	2x0,5	2x0,5	2x0,5
Standard control	yes (weekly clock)	yes (weekly clock)	yes (weekly clock)	yes (weekly clock)
BMS / MODBUS control	yes	yes	yes	yes
Fan type	Brushless DC motor	Brushless DC motor	Brushless DC motor	Brushless DC motor
Fan speed	10-speed control	10-speed control	10-speed control	10-speed control
Summer bypass	yes (automatic with adjustable flow rate)	yes (automatic with adjustable flow rate)	yes (automatic with adjustable flow rate)	yes (automatic with adjustable flow rate)
Fan boost	yes (1x connections available to voltage-free contacts: closed = switch to maximum speed)	yes (1x connections available to voltage-free contacts: closed = switch to maximum speed)	yes (1x connections available to voltage-free contacts: closed = switch to maximum speed)	yes (1x connections available to voltage-free contacts: closed = switch to maximum speed)
Fire stop	yes (1x connections available to voltage-free contacts: closed = power off)	yes (1x connections available to voltage-free contacts: closed = power off)	yes (1x connections available to voltage-free contacts: closed = power off)	yes (1x connections available to voltage-free contacts: closed = power off)
Weight [kg]	34	61	71	71
Duct diameter [mm]	194	242	242	242

## ECODESIGN DATA

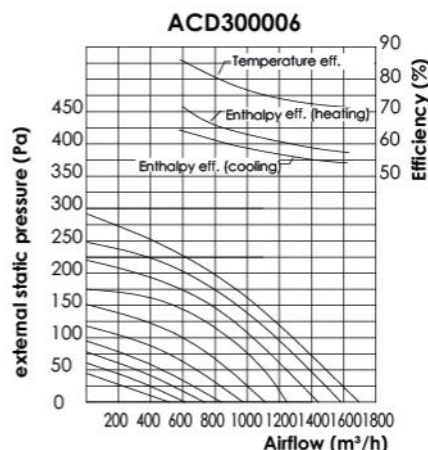
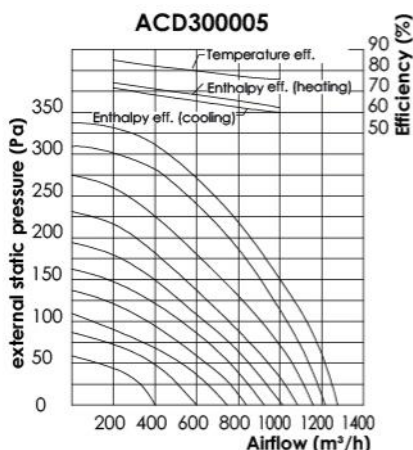
a) Brand	a) Brand	Tecnosystemi	Tecnosystemi	Tecnosystemi	Tecnosystemi
b) Model	b) Model	ACD300003	ACD300004	ACD300005	ACD300006
c) Type	c) Type	UVNR/UVB - Non-residential ventilation unit, bidirectional	UVNR/UVB - Non-residential ventilation unit, bidirectional	UVNR/UVB - Non-residential ventilation unit, bidirectional	UVNR/UVB - Non-residential ventilation unit, bidirectional
d) Driving type	d) Driving type	with 10 speeds	with 10 speeds	with 10 speeds	with 10 speeds
e) HRS type	e) HRS type	Recovery	Recovery	Recovery	Recovery
f) thermal efficiency of the heat recovery	%	76	76	76	83
g) nominal flow rate	m <sup>3</sup> /s	0.139	0.222	0.278	0.361
h) electrical power consumption	kW	0.23	0.368	0.409	0.424
i) SFPint	W/(m <sup>3</sup> /s)	191	166	184	212
j) frontal speed at design flow rate	m/s	1.5	1.26	1.42	1.7
k) nominal external pressure (Δps, ext)	Pa	120	150	150	90
l) internal pressure drop of ventilation components (Δps, int)	Pa	111	93	107	110
n) fan static efficiency as indicated in Regulation (EU) No 327/2011	%	58	56	58	58
o) maximum declared percentage of internal leakage	%	3	3	3	3
o) maximum declared percentage of external leakage	%	7.7	7.8	7.8	7.8
p) energy classification of filters	p) energy classification of filters	C	C	C	C
q) description of visual warning sign for the filter	q) description of visual warning sign for the filter	pressure control	pressure control	pressure control	pressure control
r) sound power level on the casing (LWA)	dB(A)	39	42	43	43
s) internet address	s) internet address	www.tecnosystemi.com	www.tecnosystemi.com	www.tecnosystemi.com	www.tecnosystemi.com

In accordance with EU Regulation No. 1253/2014 of the European Commission implementing Directive 2009/125/EC.

## FLOW RATE DIAGRAM ACD300003 - ACD300004



## FLOW RATE DIAGRAM ACD300005 - ACD300006



## ITEMS

CODE	DESCRIPTION
ACD300003	ENTHALPIC HEAT RECOVERY UNIT - Model HI-TECH PUR 4.0 500m3/h
ACD300004	ENTHALPIC HEAT RECOVERY UNIT - Model HI-TECH PUR 4.0 800m3/h
ACD300005	ENTHALPIC HEAT RECOVERY UNIT - Model HI-TECH PUR 4.0 1000m3/h
ACD300006	ENTHALPIC HEAT RECOVERY UNIT - Model HI-TECH PUR 4.0 1300m3/h

All rights relating to this publication are the exclusive property of Tecnosystemi SpA. Tecnosystemi SpA reserves the right to make changes at any time and without notice, for technical or commercial needs.