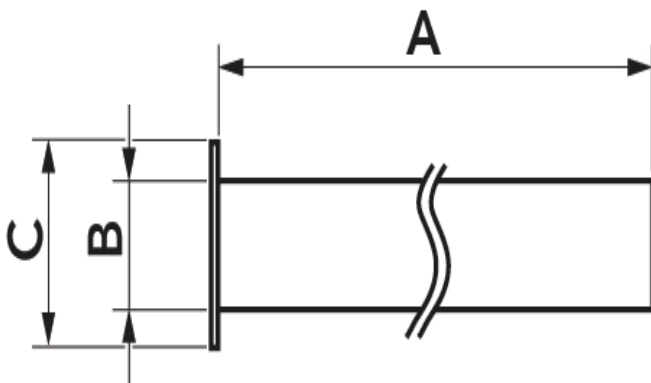


KA - exc

tear-proof kit

- cod. SCD100260 - cod. SCD100261 - cod. SCD100262
- cod. SCD100263



DIMENSIONS

CODE	A [mm]	B [mm]	C [mm]
SCD100260	500	62	100
SCD100261	500	62	100
SCD100262	1000	62	100
SCD100263	1000	62	100

DESCRIPTION

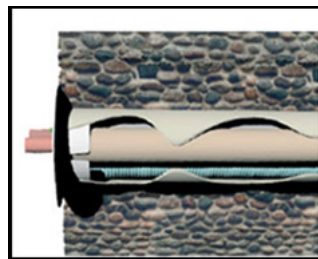
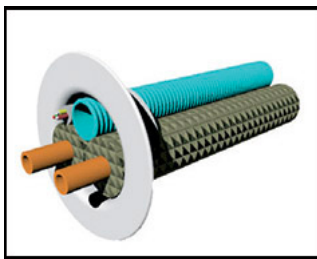
The anti-tear kit is made in stiff recycled anti-UVA PVC.

The kit makes it easier to pass the cooling pipes through the wall, preventing the insulating material from breaking or tearing on the sharp brick when being pulled during installation.

KIT CONTENTS

- 1 RA tear-resistant rosette
- 1 cable conduit
- Heat shrink barcode packaging

EXAMPLES OF INSTALLATION:



ITEMS

CODE	DESCRIPTION
SCD100260	"KA" UNIVERSAL WALL SLEEVE KIT IVORY L 500mm - KA-500
SCD100261	"KA" UNIVERSAL WALL SLEEVE KIT WHITE L 500mm - KA-500
SCD100262	"KA" UNIVERSAL WALL SLEEVE KIT WHITE L 1.000mm - KA-1000
SCD100263	"KA" UNIVERSAL WALL SLEEVE KIT IVORY L 1.000mm - KA-1000

All rights relating to this publication are the exclusive property of Tecnosystemi SpA.
Tecnosystemi SpA reserves the right to make changes at any time and without notice, for technical or commercial needs.