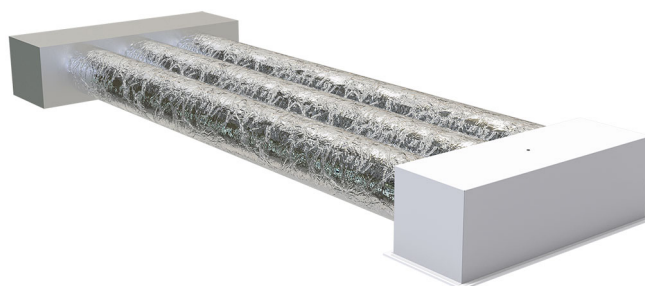


KIT RIPRESA

Recovery KIT for ducted units MOD.1-2-3

- cod. PWD301301 - cod. PWD301302 - cod. PWD301303



THE KIT CONTAINS:

- no.1 800x300 intake grille with fixed flaps tilted at 45° with removable filter in white painted aluminium
- no.3 collars for plenum mod. B2 Ø150/200 mm
- no.1 plenum 800x300x250 for intake grille with fixed flaps tilted at 45° and removable filter
- no.3 electro-galvanised metal sheet collars for plenums from Ø151 mm to Ø200 mm
- n has 1 thermal-acoustic flexible ducted pipe in aluminium double armoured wall λ 203 mm L.10 m
- 6 Hose clamp 200x220 mm
- no.1 tailor-made delivery / return plenum in aluminised PAL for ducted model 1, model 2 and model 3

DIMENSIONS

CODE	PLENUM MODEL	INTERNAL HEIGHT a [mm]	INTERNAL WIDTH b [mm]	INTERNAL DEPTH c [mm]
PWD301301	11161605 MOD. 1	on request up to 300	on request up to 1000	280 mm fixed
PWD301302	11161606 MOD. 2	on request up to 400	on request up to 1200	280 mm fixed
PWD301303	11161607 MOD. 3	on request up to 400	on request up to 1500	280 mm fixed

ITEMS

CODE	DESCRIPTION
PWD301301	KIT FOR RETURN AIR - DUCTED UNITS - MOD.1 PAL
PWD301302	KIT FOR RETURN AIR - DUCTED UNITS - MOD.2 PAL
PWD301303	"KIT FOR RETURN AIR - DUCTED UNITS - MOD.3 PAL"

All rights relating to this publication are the exclusive property of Tecnosystemi SpA.
Tecnosystemi SpA reserves the right to make changes at any time and without notice, for technical or commercial needs.