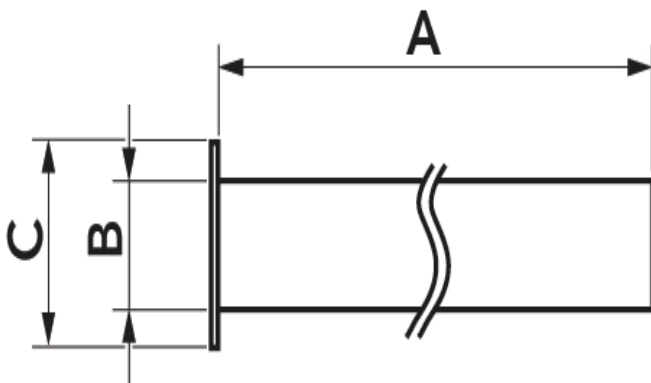


# KA - opt

## tear-proof kit

- cod. SCD100260 - cod. SCD100261 - cod. SCD100262  
- cod. SCD100263



## DIMENSIONS

| CODE      | A [mm] | B [mm] | C [mm] |
|-----------|--------|--------|--------|
| SCD100260 | 500    | 62     | 100    |
| SCD100261 | 500    | 62     | 100    |
| SCD100262 | 1000   | 62     | 100    |
| SCD100263 | 1000   | 62     | 100    |

## DESCRIPTION

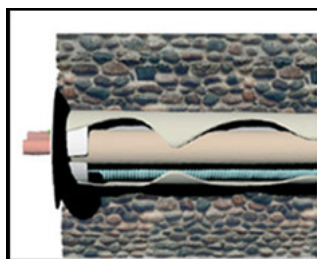
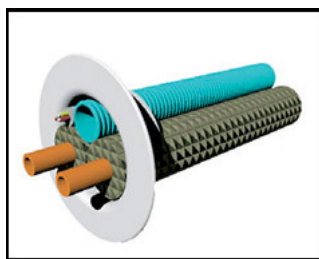
The anti-tear kit is made in stiff recycled anti-UVA PVC.

The kit makes it easier to pass the cooling pipes through the wall, preventing the insulating material from breaking or tearing on the sharp brick when being pulled during installation.

## KIT CONTENTS

- 1 RA tear-resistant rosette
- 1 cable conduit
- Heat shrink barcode packaging

## EXAMPLES OF INSTALLATION:



## ITEMS

| CODE      | DESCRIPTION  |
|-----------|--|
| SCD100260 | "KA" UNIVERSAL WALL SLEEVE KIT IVORY L 500mm - KA-500    |
| SCD100261 | "KA" UNIVERSAL WALL SLEEVE KIT WHITE L 500mm - KA-500    |
| SCD100262 | "KA" UNIVERSAL WALL SLEEVE KIT WHITE L 1.000mm - KA-1000 |
| SCD100263 | "KA" UNIVERSAL WALL SLEEVE KIT IVORY L 1.000mm - KA-1000 |

All rights relating to this publication are the exclusive property of Tecnosystemi SpA.  
Tecnosystemi SpA reserves the right to make changes at any time and without notice, for technical or commercial needs.