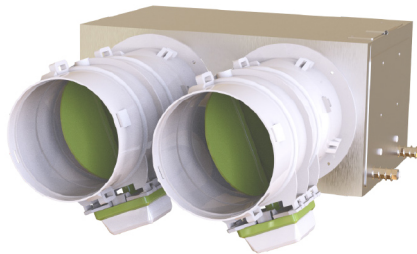


PROAIR PACK RF RED 2L

with plenum in insulated metal sheet

- cod. GAD400379 - cod. GAD400380 - cod. GAD400385
- cod. GAD400386 - cod. GAD400495 - cod. GAD400496
- cod. GAD400416 - cod. GAD400417



Programmable thermostat combination:

- 2 DISCOVERY 3X timed thermostats
- 1 timed thermostat DISCOVERY 3X + 1 timed thermostat MINI DISCOVERY 3X
- 2 MINI LED ASTRA thermostats
- 1 DISCOVERY 3X timed thermostats + 1 LEM 3X RF room probes

DESCRIPTION

The pre-assembled systems PROAIR PACK RF-L are designed to facilitate and speed up the installation of a ducted system.

The system is supplied complete with Polaris® control unit, chronothermostats and thermostats and a mechanical by-pass kit to be installed on the plenum (complete with fixing ring and counterweight).

Simply indicate, when ordering, the model of the plenum or alternatively communicate the size of the plenum and specify the code of the chosen PROAIR PACK system.

The system is supplied complete with programmable thermostats and dampers (Ø 150 or Ø 200) fixed on the insulated plenum.

In order to ensure ease and speed of installation, the PROAIR PACK RF-L system is completely assembled, configured and tested 100% by qualified personnel.

PROGRAMMABLE THERMOSTAT COMBINATION

- 2 DISCOVERY 3X timed thermostats

- 1 timed thermostat DISCOVERY 3X + 1 timed thermostat MINI DISCOVERY 3X
- 2 MINI LED ASTRA thermostats
- 1 DISCOVERY 3X timed thermostat + 1 LEM 3X RF room probe

The PROAIR PACK RF RED 2L system consists of:

- 1 sintered polystyrene delivery plenum for ducted units (specify plenum code when ordering)
- N has 1 "Polaris" control unit with preloaded protocols, app, Alexa and Google Home
- #2 motorised dampers pre-wired into system depending on zones
- Timed thermostats DISCOVERY 3X (white, wall-mounted with batteries), MINI DISCOVERY 3X or MINI led ASTRA THERMOSTATS
- 1 mechanical bypass kit to be fastened to plenum (includes fastening ring nut and counterweight)

Customisable on request

Attention! Check with the manufacturer of the indoor ducted unit whether or not it is necessary to use an appropriate interface for the control of the same (mandatory if the communication protocol is not used). There must always be an inspection hatch to access the control unit and the dampers.

ITEMS

CODE	DESCRIPTION
GAD400379	PROAIR PACK RF RED 2 L - WITH 2 CHRONOTHERMOSTATS DISCOVERY 3X BACKLIT - WITH CONTROL UNIT POLARIS 5X - Ø150 mm
GAD400380	PROAIR PACK RF RED 2 L - WITH 2 CHRONOTHERMOSTATS DISCOVERY 3X BACKLIT - WITH CONTROL UNIT POLARIS 5X - Ø200 mm
GAD400385	PROAIR PACK RF RED 2 L - WITH 1 CHRONOTHERMOSTAT DISCOVERY 3X BACKLIT + 1 CHRONOTHERMOSTAT MINI DISCOVERY 3X - WITH CONTROL UNIT POLARIS 5X - Ø150 mm
GAD400386	PROAIR PACK RF RED 2 L - WITH 1 CHRONOTHERMOSTAT DISCOVERY 3X BACKLIT + 1 CHRONOTHERMOSTAT MINI DISCOVERY 3X - WITH CONTROL UNIT POLARIS 5X - Ø200 mm
GAD400495	PROAIR PACK RF RED 2 L - 2 THERMOSTATS MINI LED - WITH TROL UNIT POLARIS 5X - 150 mm
GAD400496	PROAIR PACK RF RED 2 L - 2 THERMOSTATS MINI LED - WITH TROL UNIT POLARIS 5X - 200 mm
GAD400416	PROAIR PACK RF RED 2 L - WITH 1 CHRONOTHERMOSTAT DISCOVERY 3X BACKLIT + 1 ROOM PROBE AMBIENTE LEM 3X RF - WITH CONTROL UNIT POLARIS 5X - Ø150 mm
GAD400417	PROAIR PACK RF RED 2 L - WITH 1 CHRONOTHERMOSTAT DISCOVERY 3X BACKLIT + 1 ROOM PROBE AMBIENTE LEM 3X RF - WITH CONTROL UNIT POLARIS 5X - Ø200 mm

All rights relating to this publication are the exclusive property of Tecnosystemi SpA.
 Tecnosystemi SpA reserves the right to make changes at any time and without notice, for technical or commercial needs.