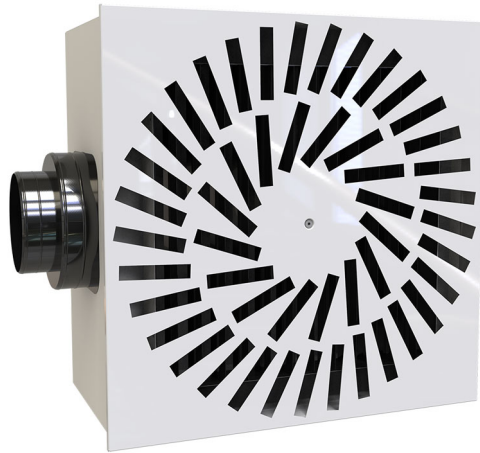


DQEP

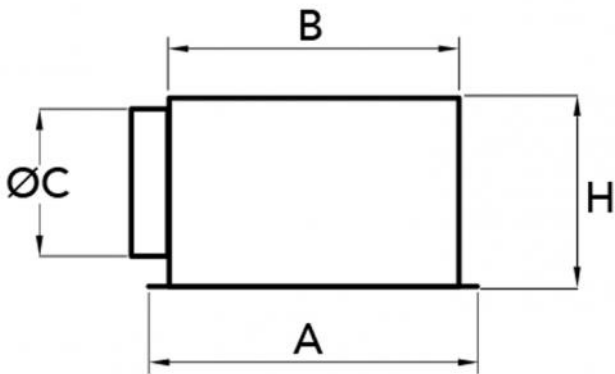
square helix diffuser 16 / 24/ 48 slots in white painted metal
adjustable jets complete with damper and lowered plenum

- cod. PWD200003 - cod. PWD200004 - cod. PWD200026



DESCRIPTION

Helical flow diffuser with adjustable jets in matt white painted steel RAL 9016 and baffles in black polypropylene.
Suitable for air delivery and intake (without baffles), complete with lowered galvanised steel plenum with damper.



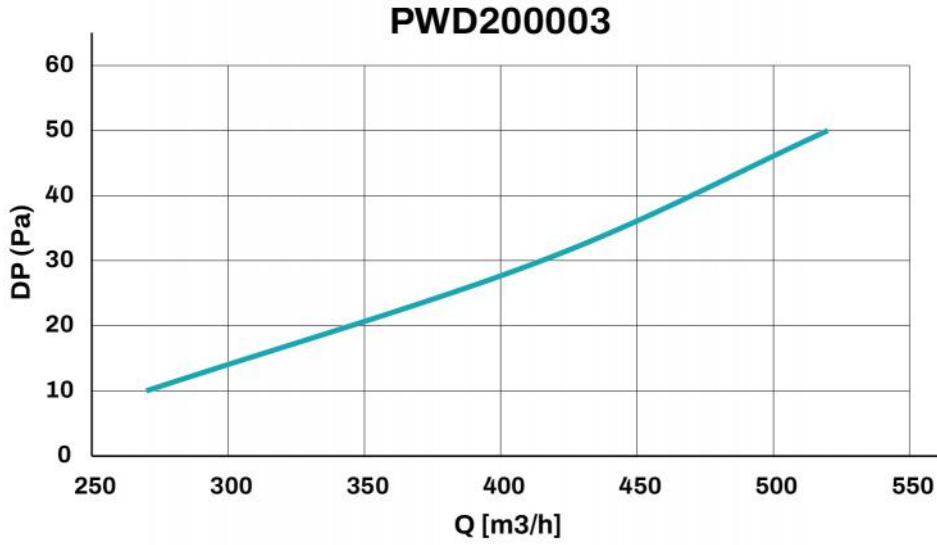
DIMENSIONS:

CODE	A [mm]	B [mm]	Ø C [mm]	H [mm]	SLOTS
PWD200003	595 x 595	575 x 575	200	280	16
PWD200004	595 x 595	575 x 575	200	280	24
PWD200026	595 x 595	575 x 575	200	280	48

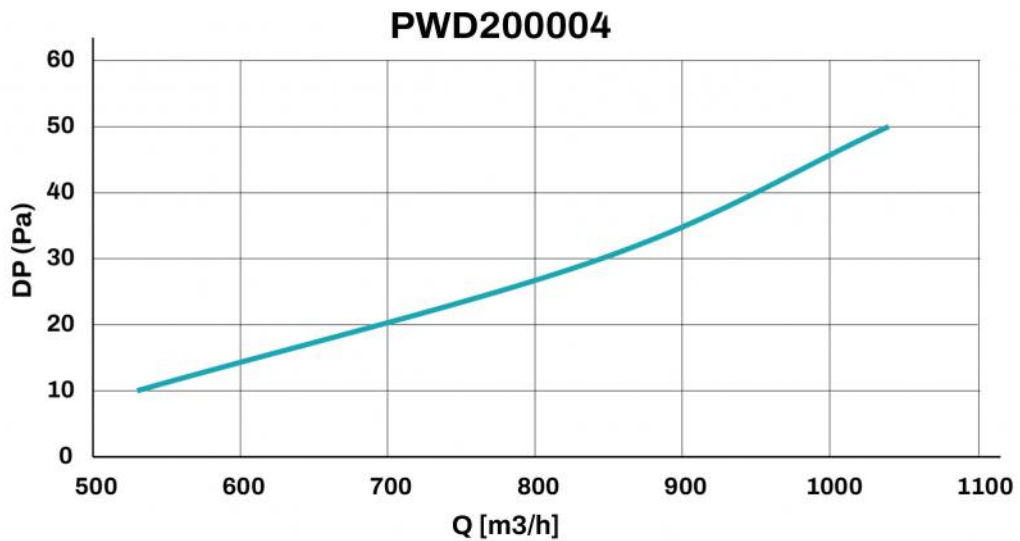
TECHNICAL DATA

CODE	Ak [m²]	Q min [m³/h]	Q max [m³/h]	LwA min [dB(A)]	LwA max [dB(A)]	MIN LANCE [m]	MAX LANCE [m]	MIN PRESSUR E DROP [Pa]	MAX PRESSUR E DROP [Pa]
PWD200003	0.0189	270	520	30	48	2.2	4.3	10	50
PWD200004	0.0449	530	1040	26	42	2.9	5.6	10	50
PWD200026	0,0568	640	1260	26	41	3,1	6,1	10	50

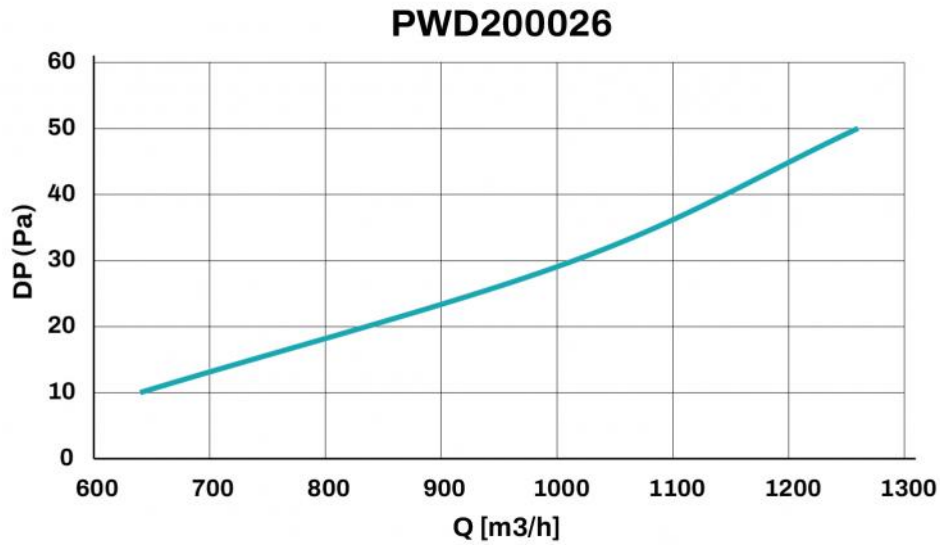
PWD200003 LOAD LOSS DIAGRAM



PWD200004 LOAD LOSS DIAGRAM



PWD200026 LOAD LOSS DIAGRAM



ITEMS

CODE	DESCRIPTION
PWD200003	PLÉNUM
PWD200004	PLÉNUM
PWD200026	SQUARE HELICAL DIFFUSER DEA WITH 24 SLOTS IN WHITE PAINTED METAL

All rights relating to this publication are the exclusive property of Tecnosystemi SpA.
 Tecnosystemi SpA reserves the right to make changes at any time and without notice, for technical or commercial needs.