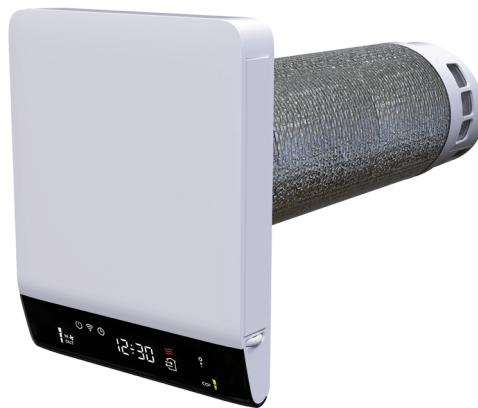


TS-DUAL FLOW

Wall-mounted ventilation unit with double-flow heat exchanger

- cod. ACC100010

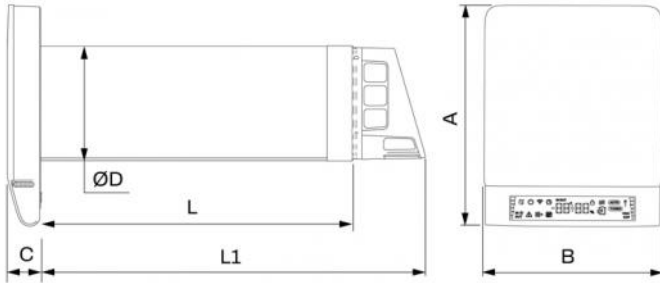


TECHNICAL SPECIFICATIONS:

- Simultaneously renews and extracts air through a single hole in the external wall
- High-efficiency copper heat exchanger with automatic frost protection system
- Electric heater
- EC fans individually adjustable to ensure balanced ventilation
- G3 filters for supply and exhaust air
- 4 temperature sensors
- Moisture sensor
- Remote control included
- Wall-mounted installation only, minimum wall thickness: 400 mm

Functionality

- Heat recovery mode, supply-only mode, exhaust-only mode, and automatic mode
- 3 adjustable speeds
- Pre-heating of incoming air
- Filter maintenance indication
- Night mode
- Turbo mode
- Antifreeze feature



DIMENSIONS

CODE	MODEL	A [mm]	B [mm]	C [mm]	ØD [mm]	L [mm]	L1 [mm]	WEIGHT [kg]
ACC100010	ACC100010	307	245	45	206	550	650	5,5

MODE

- Heat recovery mode

It simultaneously supplies and extracts air through a single opening in the external wall. The heater is activated by temperature sensors.

- Immission mode:

Only the supply fan is active. Activation of the electric heater is available.

- Extraction mode:

Only the extraction fan is active. Activation of the electric heater is not available.

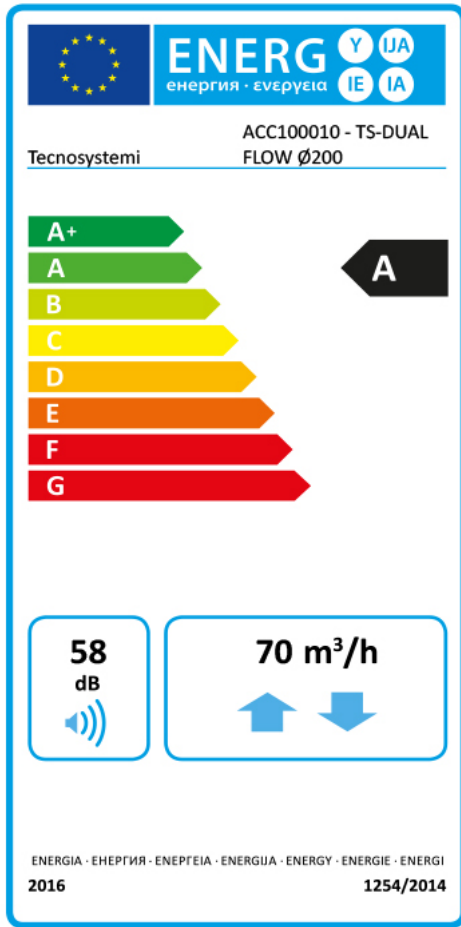
TECHNICAL DATA

Velocità	1	2	3
Alimentazione elettrica	220-240 V 50/60 Hz		
Potenza assorbita (senza riscaldatore) [W]	5.0	11.0	22.0
Potenza assorbita dal riscaldatore integrato [W]	100		
Corrente (senza riscaldatore) [A]	0.03	0.07	0.10
Corrente totale [A]	0.56	0.59	0.63
Portata aria [m³/h]	15	50	70 (90*)
Livello di pressione sonora LpA @1m [dB(A)]	25	48	55
Livello di pressione sonora LpA @3m [dB(A)]	15	37	45
Classificazione della sensibilità alla portata d'aria in funzione delle variazioni di differenza di pressione, secondo la norma EN 13141-8	S3		
Classificazione dell'ermeticità interno/esterno dell'unità completa secondo la norma EN 13141-8	D1		
Efficienza di recupero del calore [%]	≤85		
Temperatura dell'aria trasportata [°C]	-30...+50		
Filtro	G3		
Classe SEC	A		
Tipo di scambiatore di calore	Continuous Dual Flow		
Materiale dello scambiatore di calore	Copper		
*Modalità Turbo			

PRODUCT DATA SHEET Delegated Regulation (EU) No. 1254/2014

Supplier name or brand	Tecnosystemi
Model identifier	ACC100010 - TS-DUAL FLOW Ø200
Specific energy consumption (cold zone)	-69,3 kWh/(m ² · a)
Specific energy consumption class (temperate zone)	A
Specific energy consumption (temperate zone)	-36,0 kWh/(m ² · a)
Specific energy consumption (warm zone)	-14,3 kWh/(m ² · a)
Type	Bidirectional ventilation unit (UVB)
Driving type	Multiple speed drive
Type of heat recovery system	Recovery
Thermal Efficiency of Heat Recovery	0.626
Maximum capacity	70 m ³ /h
Electrical power absorbed by the fan drive	21,2 W
Noise power level	58 dB
Nominal capacity	0,014 m ³ /s
Nominal pressure difference	0 Pa
Specific Power Input	0,22 W/(m ³ /h)
Control factor	0.65
Type of control	Local environmental control - 0,65
Maximum internal leakage percentages	0.002
Maximum external leakage percentages	0.013
Location of the visual warning signal relating to the filter	Filter replacement warning icon on the control display.
Description of the visual warning signal relating to the filter	Filter replacement warning icon on the control display.
Internet address for pre-assembly and disassembly instructions	https://www.tecnosystemi.com/
Sensitivity of air flow to pressure changes at + 20 Pa and – 20 Pa	0.01
Internal/external air tightness	3,5 m ³ /h
Annual electricity consumption	203,9 kWh electricity/year
Risparmio annuo di riscaldamento in clima freddo	7,920.2 kWh primary energy/year
Risparmio annuo di riscaldamento in clima temperato	4,048.7 kWh primary energy/year
Annual heating savings in hot climates	1 830,7 kWh primary energy/year

ENERGY LABEL



ITEMS

ACC100010	RECUPERATORE DI CALORE PUNTUALE TS-DUAL FLOW Ø200
-----------	---

All rights relating to this publication are the exclusive property of Tecnosystemi SpA.
Tecnosystemi SpA reserves the right to make changes at any time and without notice, for technical or commercial needs.