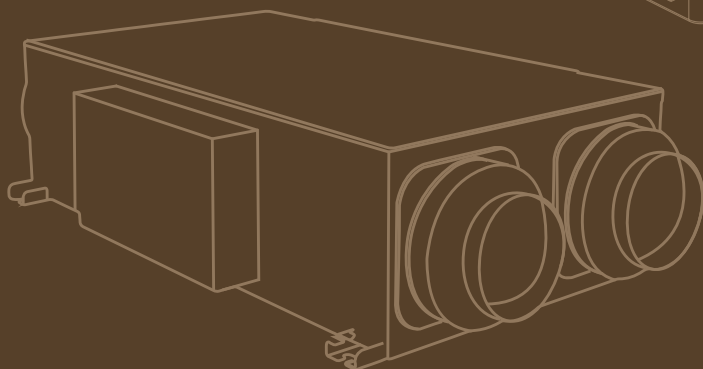
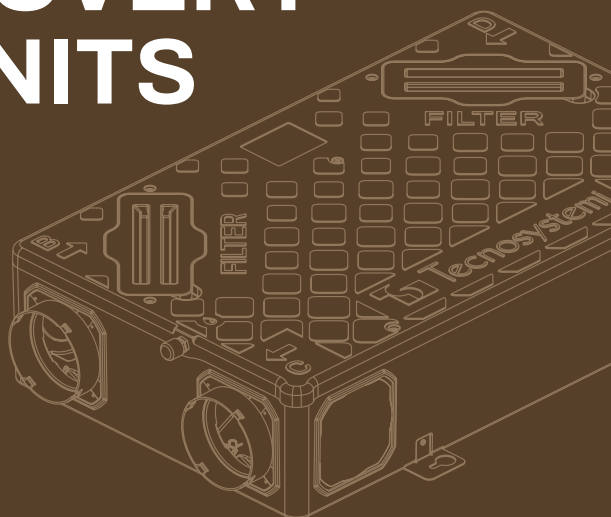
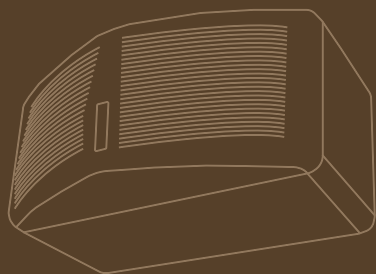




Apply.Co

Mechanical Controlled Ventilation

BUILT-IN STATIC HEAT RECOVERY UNITS



 **Tecnosystemi**
group

WALL-MOUNTED POINT RECOVERY UNITS



AIR PUR 3 PLUS

From 160 to 300 m³/h
Class A
Cross flows
Wall



SILENCE AIR

150 m³/h
Class A
Cross flows
Wall
BMS



TOTAL CLASS

400 and 1000 m³/h
Efficiency 83%
Cross flows
Wall/Ceiling
BMS

CEILING-DUCTED



COMPACT 30

100 m³/h
Class B
Cross flows
Analogue control



TOTAL AIR 200

215 m³/h
Class A
Cross flows
Electronic control
BMS

NEW



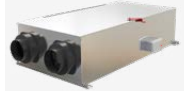
TS-HRVU

From 120 to 320 m³/h
Class A
Cross flows
Digital control
BMS



AIR PUR EVO PLUS

From 300 to 4000 m³/h
Efficiency 75%
Cross flows
Electronic control
BMS



AIR PUR EVO

From 300 to 4000 m³/h
Efficiency 75%
Cross flows
Analogue control



HI TECH PUR 4.0

From 250 to 1300 m³/h
Efficiency from 73% to 76%
Cross flows
Electronic control
BMS

WALL-MOUNTED DUCTED



TOTAL AIR EVO PLUS

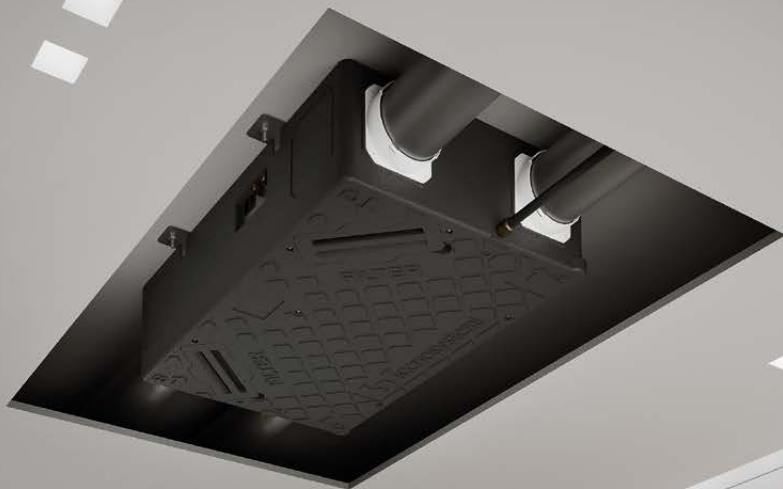
from 300 to 475 m³/h
Class B
Cross flows
Electronic control

NEW



TS-HRVU

From 120 to 320 m³/h
Class A
Cross flows
Digital control
BMS



Extractable ISO
Coarse filters
60% G4



Modbus BMS
connection



Thermo-acoustic
insulation



Brushless EC
motors



Antifreeze feature



Reversible upon
assembly



90° adjustable
aeraulic
connections



4 temperature
sensors



Free Cooling
Free Heating

TS-HRVU

VENTILATION UNIT WITH HEAT RECOVERY

NEW

A

120 to 500 m³/h

NEW



- Ideal for wall or ceiling installation
- Coarse filter 60% (G4) on the suction ducts
- RS485 communication port with modbus protocol
- Made of sintered expanded polypropylene
- Indoor and outdoor air filtration
- High-efficiency heat and humidity recovery
- Thermo-acoustic insulation
- Brushless EC motors
- Air quality index (AQI) monitoring
- 90° directional grilles

*only models 180-250-320



Made from RECYCLED
EPP (PPE)



Control device supplied
with mod. TS120



Control device supplied
with mod. TS180, TS250,
TS320, TS380 and TS500

Accessories available separately



Control for MVHR display with
weekly programming 230V



Closing plate for controls
BOX503



ISO and PM10 filter (F7)



90° CAP ADJUSTABLE AERAULIC CONNECTIONS

The aeraulic connections can be oriented at 90° thanks to the quick coupling and uncoupling system and the airtight plugs.



VERTICAL CEILING OR WALL MOUNTING

ELECTRICAL DATA

Model	HRVU TS120	HRVU TS180	HRVU TS250	HRVU TS320	HRVU TS380	HRVU TS500
Power supply	230 V – 50 Hz	230 V – 50 Hz	230 V – 50 Hz	230 V – 50 Hz	230 V – 50 Hz	230 V – 50 Hz
Maximum power(W)	50	70	120	160	180	220
Maximum current (A)	0.3	0.3	0.5	0.7	0.8	1
Insulation class	Class 1	Class 1	Class 1	Class 1	Class 1	Class 1
IP rating	IP22	IP22	IP22	IP22	IP22	IP22
Operating temperature in the installation compartment (°C)	-10/+40					
Relative operating humidity (%RH at 25° C)	< 85 %	< 85 %	< 85 %	< 85 %	< 85 %	< 85 %

PERFORMANCE DATA

Volumetric flow rate (m3/h) maximum at 100 Pa	120	180	250	320	380	500
Energy rating (SEC temperate climate)	A	A	A	A	A	A
Heat Efficiency (%)	87	85	83	82	83	81
Type of heat recovery unit	Sensitive backflow heat exchanger HRC1a					
Thermal by-pass	Not present		Electronically operated mechanical system			
Minimum External Air Temperature (°C)	-15	-15	-15	-15	-15	-15
Reversible flows	yes	yes	yes	yes	yes	yes
Anti-freeze function	no	yes	yes	yes	yes	yes
Air filters as standard	ISO COARSE 65% (G4)					
Additional air filters (upon request)	ISO ePM1 >50% (F7)					
Sound Power LWA	46	47	48	46	46	48

COMPACT 30

COMPACT CEILING-MOUNTED DUCTABLE
STATIC HEAT RECOVERY UNITS

MADE IN ITALY

CE

COMPACT 30

TECHNICAL SPECIFICATIONS

- For false ceiling installation
- Power supply: 230V - 50 Hz
- Centrifugal EC motors
- Removable grade G4 filters
- Couplers: \varnothing 150 mm
- High-efficiency polystyrene heat exchanger pack
- Removable delivery and intake filters
- Equipped with coupling for condensate drain

ELECTRICAL AND PERFORMANCE DATA

TYPE	Bidirectional Residential Ventilation Unit
POWER SUPPLY	230 V - 50 Hz
ELECTRICAL POWER ABSORBED AT MAXIMUM FLOW RATE FOR SINGLE FLOW [W]	27,5
ELECTRICAL POWER ABSORBED AT MAXIMUM CAPACITY [W]	55
MAXIMUM CAPACITY (A 100 PA) [m ³ /h]	120
THERMAL EFFICIENCY OF THE EXCHANGE PACK	88%
ENERGY CLASS (CLASS SEC TEMPERATE CLIMATE)	A
TYPE OF HEAT RECOVERY	Recovery
TYPE OF CONTROL	Manual control



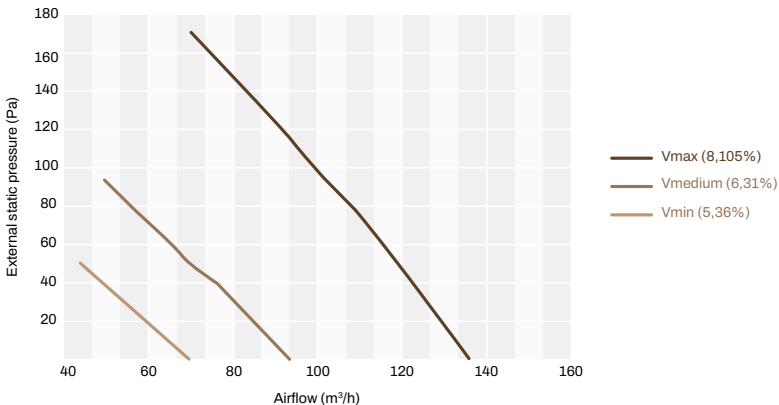
LATERAL VIEW Without closing caps



EXCHANGE PACK
Extraction from the side



Flow regulator included



TOTAL AIR 200

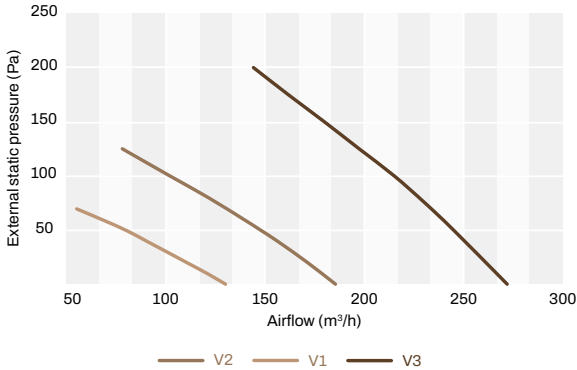
HIGH-EFFICIENCY CEILING-MOUNTED STATIC HEAT RECOVERY UNIT WITH AUTOMATIC MECHANICAL BY-PASS

MADE IN ITALY CE



TECHNICAL SPECIFICATIONS

- For false ceiling installation
- Power supply 230V - 50Hz
- Centrifugal EC motors
- Removable grade G4 filters
- Ø 150 mm couplings
- High-efficiency polystyrene heat exchanger pack
- Removable delivery and intake filters
- Equipped with coupling for condensate drain
- Equipped with automatic bypass activation
- Includes wall-mounted control panel with dirty filter alert



ELECTRICAL AND PERFORMANCE DATA	
TYPE	Bidirectional Residential Ventilation Unit
POWER SUPPLY	230 V - 50 Hz
MAXIMUM FLOW RATE (A 100 PA) [M³/H]	215
THERMAL EFFICIENCY OF THE EXCHANGE PACK	85%
ENERGY CLASS (CLASS SEC TEMPERATE CLIMATE)	A
TYPE OF HEAT RECOVERY	Recovery
TYPE OF CONTROL	Local environmental control

Ceiling mounted

Grade F7 filters on request

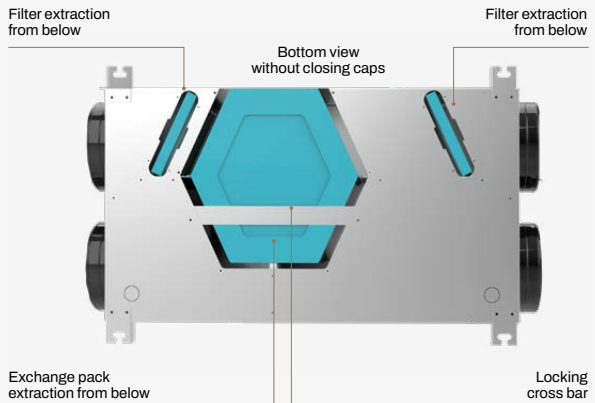


Wall control panel included



Advanced configuration terminal for installer (optional)

BOTTOM VIEW Without closing caps



Note: to extract the exchange pack it's necessary to remove the locking cross bar

AIRPUR EVO PLUS

CEILING-MOUNTED DUCTABLE STATIC HEAT RECOVERY UNIT WITH AUTOMATIC MECHANICAL BYPASS



TECHNICAL SPECIFICATIONS

- Plastic heat exchanger pack
- Removable grade G4 filters
- Coupling for condensate drain
- Internal insulation
- Heating battery (on request)
- Anchor brackets
- Includes wall-mounted control panel with dirty filter alert
- Equipped with automatic mechanical bypass activation



F6 - F7 - F8 Filters on request

MODEL	AIR FLOW RATE [m³/h]	HEAD [Pa]	EXCHANGE EFFICIENCY [%]	SOUND POWER LEVEL [dB(A)]	VOLTAGE [V]	POWER CONSUMPTION [W]	WEIGHT [kg]
300E EVO-PLUS	300	430	75	40	230 V - 1 Ph - 50 Hz	200	55
500E EVO-PLUS	500	400	75	42	230 V - 1 Ph - 50 Hz	280	70
800E EVO-PLUS	800	400	75	58	230 V - 1 Ph - 50 Hz	420	84
1300E EVO-PLUS	1300	330	74	65	230 V - 1 Ph - 50 Hz	1100	135
1700E EVO-PLUS	1700	315	72	65	230 V - 1 Ph - 50 Hz	1100	203
2500E EVO-PLUS	2500	690	70	62	230 V - 1 Ph - 50 Hz	2080	211
4000E EVO-PLUS	4000	540	70	79	400 V - 3 Ph - 50 Hz	3000	290

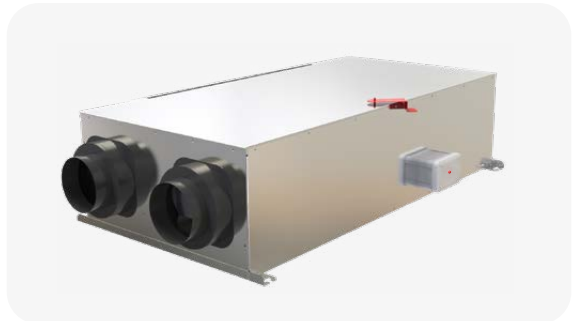
AIRPUR EVO

HORIZONTAL STATIC HEAT RECOVERY UNIT WITH MECHANICAL BYPASS



TECHNICAL SPECIFICATIONS

- Plastic heat exchanger pack
- Removable grade G4 filters
- Coupling for condensate drain
- Internal insulation
- Heating batter (on request)
- Anchor brackets
- Equipped with manual mechanical bypass activation



MODEL	AIR FLOW RATE [m³/h]	HEAD [Pa]	EXCHANGE EFFICIENCY [%]	SOUND POWER LEVEL [dB(A)]	VOLTAGE [V]	POWER CONSUMPTION [W]	WEIGHT [kg]
300E EVO	300	320	75	40	230 V - 1 Ph - 50 Hz	200	50
500E EVO	500	330	75	42	230 V - 1 Ph - 50 Hz	356	68
1000E EVO	1000	330	74	62	230 V - 1 Ph - 50 Hz	600	129
1700E EVO	1700	290	72	65	230 V - 1 Ph - 50 Hz	800	193
2500E EVO	2500	360	70	62	230 V - 1 Ph - 50 Hz	1100	224
4000E EVO	4000	700	70	79	400 V - 3 Ph - 50 Hz	3000	290

SILENCE AIR PLUS

WALL-MOUNTED RESIDENTIAL HEAT RECOVERY UNIT,
CAN BE INTEGRATED WITH BMS SYSTEMS



TECHNICAL SPECIFICATIONS

- Ideal for wall mounting
- Hepa filtering efficiency 99%
- RS485 communication port with modbus protocol
- Insulating material that prevents condensation
- Indoor and outdoor air filtration
- High-efficiency heat and humidity recovery
- Low noise
- Brushless EC motors
- Air quality index (AQI) monitoring



HI-TECH PUR 4.0

ENTHALPIC HEAT RECOVERY UNIT
CEILING-MOUNTED DUCTED



TECHNICAL SPECIFICATIONS

- For residential and non-residential applications
- Removable enthalpy heat exchanger pack
- Automatic by-pass
- Brushless EC motors
- Internal structure in EPS that prevents condensation and improves thermal insulation
- Backlit LCD digital remote control
- BMS compatible VIA RS485 modbus protocol
- ON/OFF remote control
- Silent function "sleep"
- Defrost Function



Digital remote control

MODEL	FLOW RATE [m³/h]	EXTERNAL PRESSURE [Pa]	ENTHALPY EFFICIENCY [%]		NOISE [dB(A)]	POWER SUPPLY	ELECTRICAL POWER [W]	WEIGHT [kg]
			Cooling	Heating				
ACD300002	250	100	62-71	65-73	34.5	220-240V-50Hz-1Ph	200	25
ACD300003	500	120	60-74	63-78	39	220-240V-50Hz-1Ph	280	34
ACD300004	800	150	63-71	65-75	42	220-240V-50Hz-1Ph	420	61
ACD300005	1000	150	60-70	62-72	43	220-240V-50Hz-1Ph	1100	71
ACD300006	1300	90	56-68	59-70	43	220-240V-50Hz-1Ph	1100	71

AIR PUR 3 PLUS WI

STATIC HEAT RECOVERY BUILT-IN CROSS-FLOW
AND WALL-MOUNTED 160 - 230 - 300

MADE IN ITALY



AirPur3^{PLUS}
wi



Built-in model



Wall mounted model

Technical and Performance data

MODEL	160 WI	230 WI	300 WI
POWER SUPPLY [V]	230	230	230
FREQUENCY [Hz]	50	50	50
MAX POWER [W]	30	35	70
PROTECTION RATING	IP20		
% EXCHANGE EFFICIENCY	I°: 76%	I°: 72%	I°: 67%
	II°: 74%	II°: 70%	II°: 64%
	III°: 73%	III°: 68%	III°: 60%
AIR FLOW RATE [m³/h]	I°: 70	I°: 92	I°: 150
	II°: 120	II°: 166	II°: 264
	III°: 161	III°: 230	III°: 300
SOUND LEVEL [dB(A)]	I°: 36	I°: 36	I°: 40
	II°: 44	II°: 45	II°: 51
	III°: 48	III°: 49	III°: 53
WEIGHT [kg]	18	19	19
WALL HOLE [mm]	230 x 490	230 x 490	230 x 490

WI-FI Control mode (Off-Line)

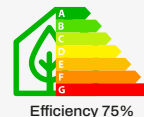


Heat Recovery System

SUMMER



WINTER



Tecnosystemi S.p.A. Società Benefit

PLANT 1 – Via dell'Industria, 2/4 | PLANT 2 – Via Caduti del Lavoro, 7 | PLANT 3 – Via Caduti del Lavoro, 5
Z.i. San Giacomo di Veglia - 31029 Vittorio Veneto (TV)

Tel. +39 0438.500044 | info@tecnosystemi.com | www.tecnosystemi.com
C.F. - P.IVA - R.I. TV IT02535780247 - Cap. Soc. € 5.000.000,00 i.v.

