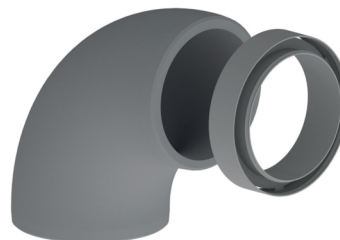


DATASHEET

VMC Distribution

90° elbow in EPS for VMC Ø160

COD. ACC600038



TECHNICAL SPECIFICATIONS:

- Grey colour EPS insulated elbow
- Wall thickness: 15.5mm
- Weight 0,24 kg
- Dimensions: 295 x 191 x 295 mm
- internal Ø 160
- Temperature range -25 / +80 (C°)
- Max ir flow rate 425 m³/h
- Thermal resistance: 0.032 m²K/W

ITEMS

CODE	DESCRIPTION
ACC600038	