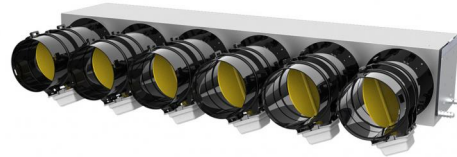


product details

PROAIR PACK CAB BLACK 6L - with insulated sheet metal plenum

COD. GAD400321 - GAD400322 - GAD400407 - GAD400408



TECHNICAL CHARACTERISTICS

The PROAIR PACK CAB BLACK 6L system consists of:

- 1 insulated delivery plenum for ducted units (specify plenum code when ordering)
- 1 POLARIS 4X or POLARIS 5X control unit with preloaded protocols, apps, Alexa and Google Home
- 6 motorised dampers pre-wired to system
- 6 STEALTH 3X backlit timed thermostats (white built-in wired)
- 1 mechanical bypass kit to be fastened to plenum (includes fastening ring nut and counterweight)
- 1 50 m cable reel, 4-wire for timed thermostat connection

Customisable on request

ITEMS

CODE	DESCRIPTION
GAD400321	KIT "PROAIR PACK CAB BLACK 6L" - DAMPERS Ø 150 mm WITH 6 pcs CHRONO-THERMOSTATS "STEALTH 2X" - CONTROL UNIT "POLARIS 4X"
GAD400322	KIT "PROAIR PACK CAB BLACK 6L" - DAMPERS Ø 200 mm WITH 6 pcs CHRONO-THERMOSTATS "STEALTH 2X" - CONTROL UNIT "POLARIS 4X"
GAD400407	PROAIR PACK CAB BLACK 6 L - WITH 6 CHRONOTERMOSTATSSTEALTH 3X - WITH CONTROL UNIT POLARIS 5X - Ø150 mm
GAD400408	PROAIR PACK CAB BLACK 6 L - WITH 6 CHRONOTERMOSTATSSTEALTH 3X - WITH CONTROL UNIT POLARIS 5X - Ø200 mm