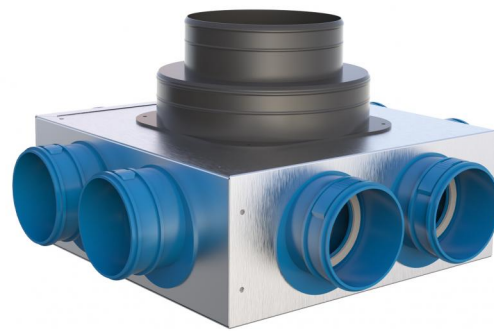


# DATASHEET

rev. 00 - 23/11/2023

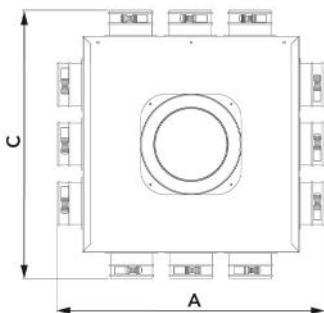
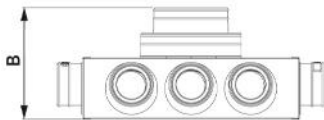
Distribution box for VMC for flexible pipe 4  
- 6 - 8 - 10 - 12 outputs 75 and 90

ACD600147 - ACD600148 - ACD600149  
ACD600150 - ACD600151 - ACD600152  
ACD600153 - ACD600154 - ACD600155  
ACD600156



## TECHNICAL SPECIFICATIONS:

- Made of galvanized sheet metal
- Internal insulation in 3 mm thick polyethylene
- With inlet collar with double diameter  $\varnothing 150 - \varnothing 200$
- Outgoing collars as shown in the table
- Complete with brackets for ceiling mounting
- Box supplied pre-assembled
- Available with collar  $\varnothing 100 / \varnothing 125 / \varnothing 150$



## DIMENSIONS

CODE	A [mm]	B [mm]	C [mm]	INPUT Ø [mm]	No.of OUTLETS - Ø [mm]
ACD600147	415	222	311	150 / 200	4 - 75
ACD600148	415	222	363	150 / 200	6 - 75
ACD600149	415	222	415	150 / 200	8 - 75
ACD600150	533	222	533	150 / 200	10 - 75
ACD600151	533	222	533	150 / 200	12 - 75
ACD600152	419	222	311	150 / 200	4 - 90
ACD600153	419	222	365	150 / 200	6 - 90
ACD600154	419	222	419	150 / 200	8 - 90
ACD600155	537	222	537	150 / 200	10 - 90
ACD600156	537	222	537	150 / 200	12 - 90

## ITEMS

CODE	DESCRIPTION
ACD600147	CMV INSULATED SHEET METAL PLENUM 90° Ø 75 - 4 OUTLETS 150/200
ACD600148	CMV INSULATED SHEET METAL PLENUM 90° Ø 75 - 6 OUTLETS 150/200
ACD600149	CMV INSULATED SHEET METAL PLENUM 90° Ø 75 - 8 OUTLETS 150/200
ACD600150	CMV INSULATED SHEET METAL PLENUM 90° Ø 75 - 10 OUTLETS 150/200
ACD600151	CMV INSULATED SHEET METAL PLENUM 90° Ø 75 - 12 OUTLETS 150/200
ACD600152	CMV INSULATED SHEET METAL PLENUM 90° Ø 90 - 4 OUTLETS 150/200
ACD600153	
ACD600154	
ACD600155	
ACD600156	CMV INSULATED SHEET METAL PLENUM 90° Ø 92 - 12 OUTLETS 150/200