

HTL

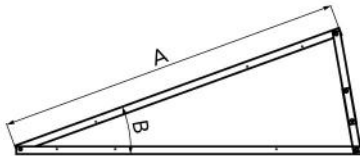
verstellbares Halterungsdreieck für
Flachdächer

FVD500002 - FVD500003 - FVD500004
FVD500005 - FVD500006 - FVD500007



TECHNISCHE EIGENSCHAFTEN:

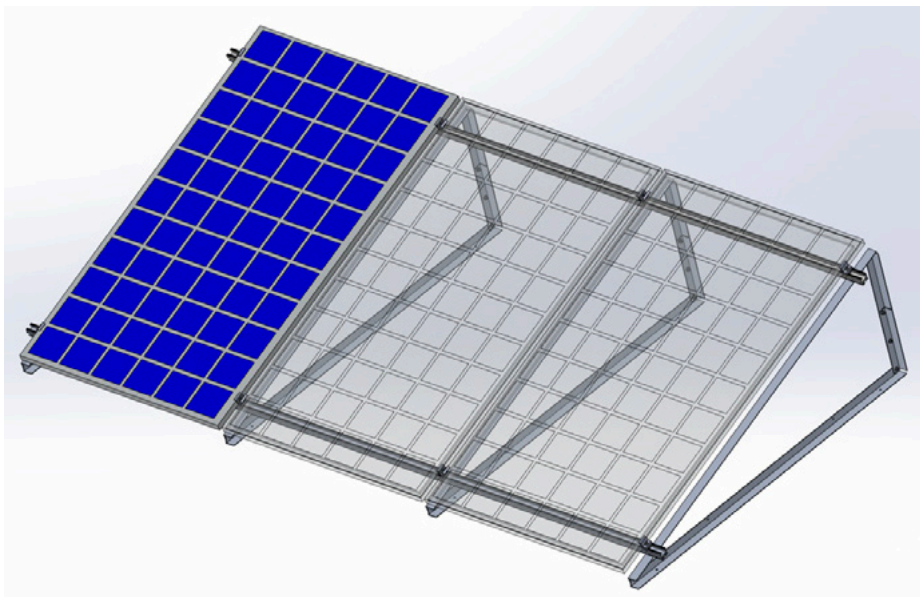
- Material: EN AW 6060
- „L“-Profil 40 x 40
- Edelstahlschrauben



ABMESSUNGEN

CODE	A [mm]	B (Grad)
FVD500002	1800	10° - 15° - 20°
FVD500003	1800	25° - 30° - 35°
FVD500004	2000	10° - 15° - 20°
FVD500005	2000	25° - 30° - 35°
FVD500006	2200	10° - 15° - 20°
FVD500007	2200	25° - 30° - 35°

BEISPIELE FÜR DEN EINBAU:



ARTIKEL

CODE	DESCRIPTION
FVD500002	
FVD500003	
FVD500004	
FVD500005	
FVD500006	
FVD500007	