

TECHNISCHE DATENBLÄTTER

rev. 00 - 29/11/2022

Fass B/B

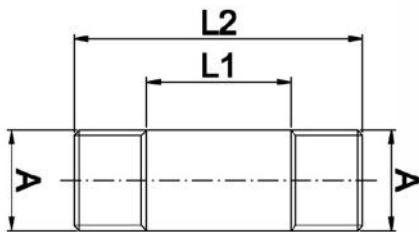
26004500 - 26004510 - 26004520
26004530 - 26004540 - 26004550
26004560 - 26004570 - 26004580
26004590 - 26004600 - 26004610
26004620 - 26004630 - 26004640
26004650 - 26004660 - 26004670
26004680 - 26004690 - 26004700



TECHNISCHE EIGENSCHAFTEN:

Aus Messing

- Anwendung für Hydraulik
- Gasgewinde
- Max. Betriebstemperatur +130°C



ABMESSUNGEN

CODE	A	L1 [mm]	L2 [mm]
26004500	1/2"	30	60
26004510	1/2"	50	80
26004520	1/2"	70	100
26004530	1/2"	120	150
26004540	1/2"	170	200
26004550	1/2"	220	250
26004560	1/2"	270	300
26004570	3/4"	--	60
26004580	3/4"	--	80
26004590	3/4"	--	100
26004600	3/4"	--	150
26004610	3/4"	--	200
26004620	3/4"	--	250
26004630	3/4"	--	300
26004640	1"	--	60
26004650	1"	--	80
26004660	1"	--	100
26004670	1"	--	150
26004680	1"	--	200
26004690	1"	--	250
26004700	1"	--	300

ARTIKEL

CODE	DESCRIPTION
26004500	
26004510	
26004520	
26004530	
26004540	
26004550	
26004560	
26004570	
26004580	
26004590	
26004600	
26004610	
26004620	
26004630	
26004640	
26004650	
26004660	
26004670	
26004680	
26004690	
26004700	