

TECHNISCHE DATENBLÄTTER

rev. 00 - 29/11/2022

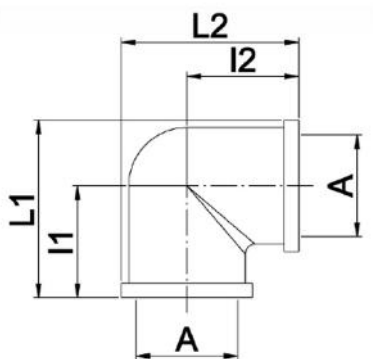
Kurve B/B

26002910 - 26002920 - 26002930
26002940 - 26002950



TECHNISCHE EIGENSCHAFTEN:

- Aus Messing
- Anwendung für Hydraulik
- Gasgewinde
- Maximale Betriebstemperatur +130°C



ABMESSUNGEN

| CODE | A | l1 [mm] | l2 [mm] | L1 [mm] | L2 [mm] |
|----------|--------|---------|---------|---------|---------|
| 26002910 | 1/2" | 25 | | 38 | |
| 26002920 | 3/4" | 31 | | 46,5 | |
| 26002930 | 1" | 36 | | 54 | |
| 26002940 | 1" 1/4 | 40,5 | | 65,5 | |
| 26002950 | 1" 1/2 | 46 | | 74 | |

ARTIKEL

| CODE | DESCRIPTION |
|----------|-------------|
| 26002910 | |
| 26002920 | |
| 26002930 | |
| 26002940 | |
| 26002950 | |