

DATASHEET

rev. 00 - 28/11/2022



Compact gas meter for household use in aluminium class G4 for methane / LPG

26000210



DESCRIPTION

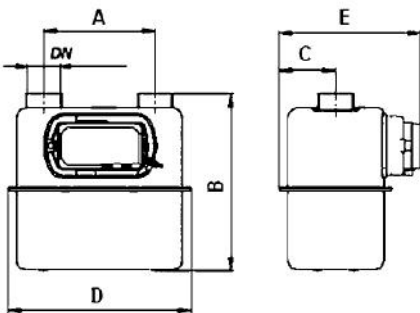
The compact gas meter is designed for domestic use, with high performance in terms of measurement accuracy and safety: in particular, the magnetic transmission excludes any possibility of gas leakage, reducing load losses.

The gas meter is designed for the assembly of a pulse generator (1 imp = 0.01 m³) for remote reading.

The epoxy powder coating guarantees perfect protection against atmospheric agents; in any case it is good practice to protect the meter from the direct action of ultraviolet rays and from the weather.

TECHNICAL SPECIFICATIONS:

- Max operating pressure p max = 2.0 bar aluminium
- Operating temperature -25°C to +55°C
- Max numerator display 99999,999 m³
- Starting flow rate 0.005 m³/h
- MID approval
- Equipped with a mechanical anti-return lock
- Colour RAL 7035
- Approvals: CE-MID; EN 1359



DIMENSIONS:

CODE	A [mm]	B [mm]	C [mm]	D [mm]	E [mm]
26000210	110	210	75	210	175

TECHNICAL DATA

CODE	CYCLIC V [dm ³]	CONNECTIONS [dn]	MIN FLOW RATE [m ³ /h]	MAX FLOW RATE [m ³ /h]	WEIGHT [kg]
26000210	1,2	1 1/4" gas	0,04	6	1,9

ITEMS

CODE	DESCRIPTION
26000210	