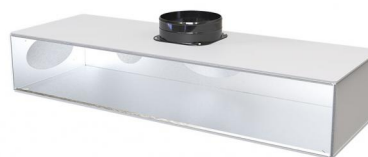


DATASHEET

rev. 00 - 5/11/2022

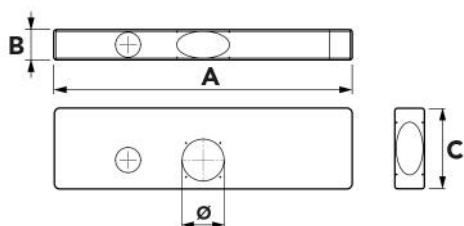
Insulated, multi-intake plenum for linear diffuser 2/3 slots

PWD400386 - PWD400387 - PWD400388
PWD400389



TECHNICAL SPECIFICATIONS:

- Made of insulated galvanised sheet metal
- Outer closed cell polyethylene coating (thickness 3 mm)
- Collars for upper coupling supplied
- Collars for rear and side inlets available on request (see combinations in table)
- Pre-cut holes for MVHR
- Connectors for flexible CMV hose $\varnothing 92 / \varnothing 75$ on request
- Diffuser fastening brackets and hardware kit supplied



DIMENSIONS

CODE	DIMENSIONS A [mm]	DIMENSIONS B [mm]	DIMENSIONS C [mm]	NO. OF UPPER COLLARS SUPPLIED / MOD.	BACK COLLAR ON REQUEST / MOD.	SIDE COLLAR ON REQUEST / MOD.	NO. OF COMPATIBLE DIFFUSER SLOTS
PWD400386	630	105	280	1 pc. / E5 ($\varnothing 150$)	1 pc. / C3 (OVAL $\varnothing 150-125$)		2
PWD400387	830	105	280	1 pc. / E5 ($\varnothing 150$)	1 pc. / C3 (OVAL $\varnothing 150-125$)		2
PWD400388	1030	105	280	1 pc. / E5 ($\varnothing 150$)	1 pc. / C3 (OVAL $\varnothing 150-125$)		2
PWD400389	1530	145	280	1 pc. / E5 ($\varnothing 150$)	1 pc. / C3 (OVAL $\varnothing 150-125$)		3

ITEMS

CODE	DESCRIPTION
PWD400386	
PWD400387	
PWD400388	
PWD400389	