

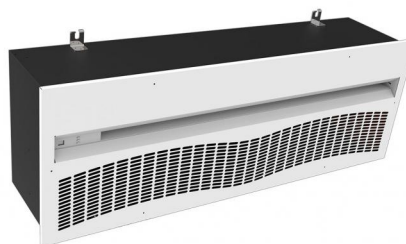
# DATASHEET

rev. 01 - 4/10/2022

MADE IN ITALY

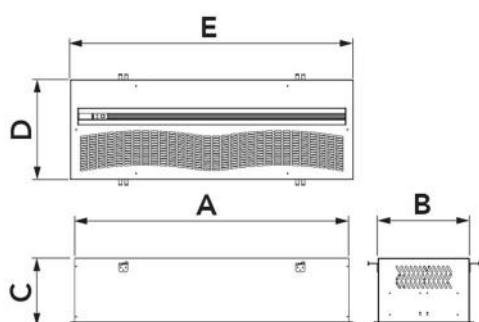
Built-in tangential air curtain at room temperature

12450014 - 12450024 - 12450034



## TECHNICAL SPECIFICATIONS:

- 3 models in white
- 3 speeds operated by remote control
- Air curtains are designed for indoor use
- Total integration to the false ceiling
- The unit must be installed horizontally
- Maximum installation height 2.2 m



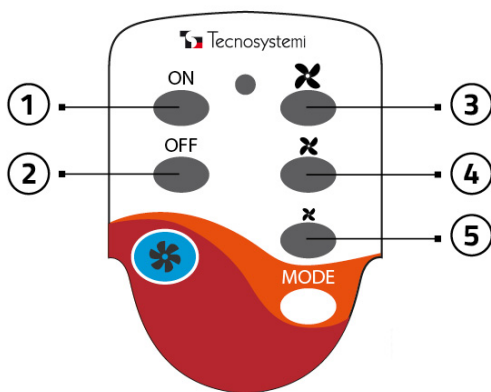
## DIMENSIONS

CODE	A [mm]	B [mm]	C [mm]	D [mm]	E [mm]	SUITABLE FOR LARGE DOORS [mm]
12450014	1086	362	270	396	1120	L.1000 H.Max.2200 H.Min.1800
12450024	1440	362	270	396	1472	L.2000 H.Max.2200 H.Min.1800
12450034	2040	362	270	396	2072	L.1500 H.Max.2200 H.Min.1800

## TECHNICAL DATA

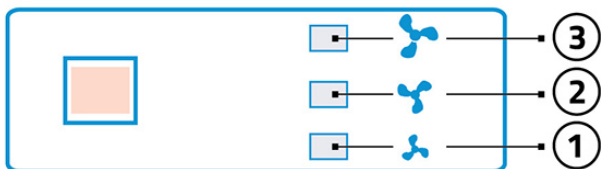
CODE	MODEL	SUPPLY VOLTAGE [V]	FREQUENCY [Hz]	POWER CONSUMPTION [W]	AIR SPEED AT INLET [m/s]	AIR FLOW RATE [m³/s]	SOUND POWER LEVEL [DB(A)]	WEIGHT [kg]
12450014	1100	230 ac	50	75	I:8 II:9 III:10	I:706 II:768 III:967	I:46 II:51 III:53	22
12450024	1500	230 ac	50	190	I:8 II:9 III:10	I:1135 II:1238 III:1289	I:50 II:53 III:54	33
12450034	2000	230 ac	50	190	I:8 II:9 III:10	I:1419 II:1560 III:1635	I:48 II:51 III:52	47

## REMOTE CONTROL



- [1] ON / Turns the appliance on
- [2] OFF / Shuts the appliance off
- [3] Maximum speed
- [4] Medium speed
- [5] Low speed

## DASHBOARD LABEL



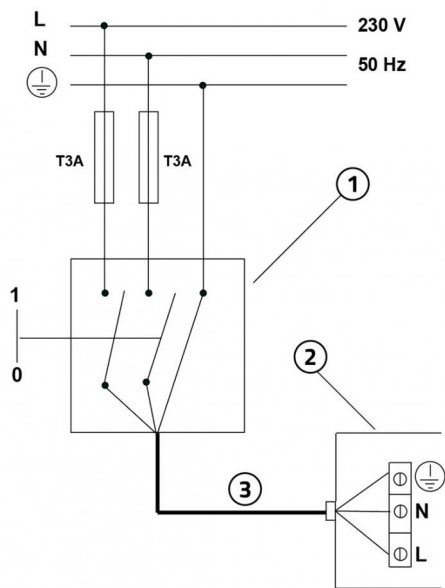
- [1] 1st speed (Min) 1 LED LIT
- [2] 2nd speed (Med) 2 LEDS LIT
- [3] 3rd speed (Max) 3 LEDS LIT

## AUTOMATIC START KIT FOR AIR CURTAINS.



This kit, sold separately from the air curtain, allows you to switch the machine on and off by opening and closing the door.

## SINGLE-PHASE POWER SUPPLY AND WIRING DIAGRAM

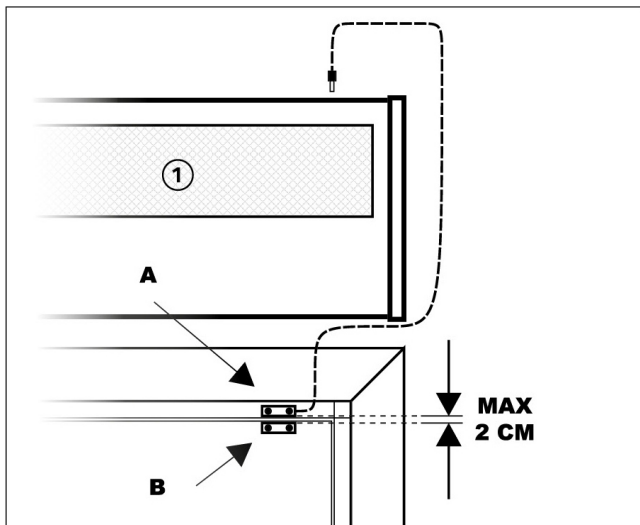


- [1] Omnipolar thermal magnetic protection switch compliant with EN 61508:1
- [2] Power cable 3x2.5 mm<sup>2</sup>
- [3] Electrical connection box

### IMPORTANT!

During the electrical connection, the installer must comply with the polarities indicated by the plate in front of the power supply terminal board.

## INSTALLING AND COMMISSIONING THE AUTOMATIC START KIT (optional)

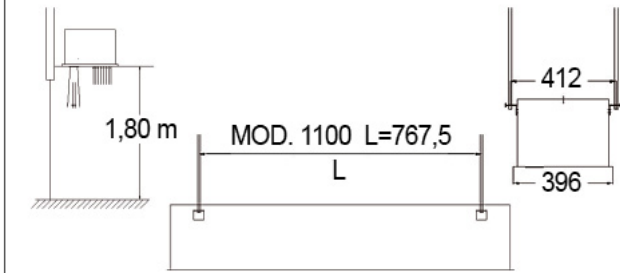


- [1] Air curtain

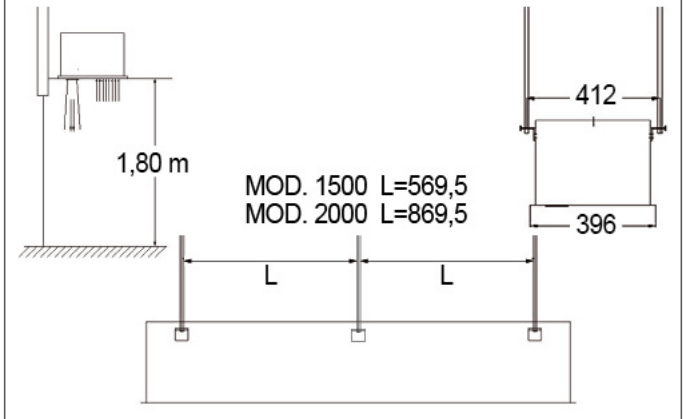
Connect the wired sensor to the air curtain via jack.  
 Attach the magnetic sensor A to the door casing or to a solid point with the door frame.  
 Attach the second sensor to the moving part of the door leaving no more than 2 cm between the two sensors.  
 When the "automatic start kit" is installed, the air curtain can be switched on and off with the opening / closing of the door.

## INSTALLATION AND START-UP

cod. 12450014



cod. 12450024 - 12450034



## ITEMS

CODE	DESCRIPTION
12450014	"ARIA 2 ELEGANCE T" 1100 BUILT-IN TANGENTIAL AIR CURTAINS AT ROOM TEMPERATURE
12450024	"ARIA 2 ELEGANCE T" 1500 BUILT-IN TANGENTIAL AIR CURTAINS AT ROOM TEMPERATURE
12450034	"ARIA 2 ELEGANCE T" 2000 BUILT-IN TANGENTIAL AIR CURTAINS AT ROOM TEMPERATURE