

DATASHEET

rev. 01 - 09/02/23

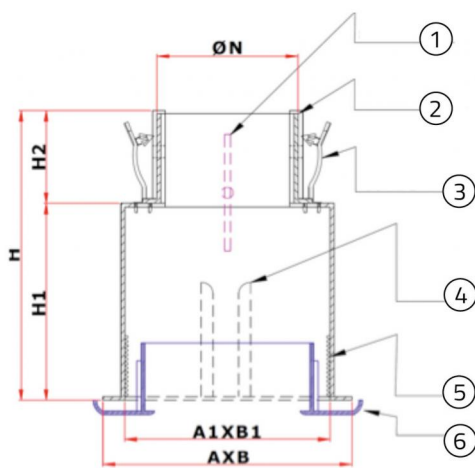
PPA

plenum in white ABS plastic anti-condensation

PWC400008 - PWC400009 - PWC400010
PWC400011 - PWC400012 - PWC400013
PWC400014

TECHNICAL SPECIFICATIONS:

- Made of anti-condensation ABS
- Adjustable butterfly calibration damper
- Coupling between delivery nozzle and plenum with steel clips
- Telescopic rear collar for hoses of various diameters
- With calibration damper
- Hooks are included on the 4 outer sides where brackets to secure the plenum on plasterboard or PAL ducting can be installed



- [1] Damper
- [2] Adjustable oval coupler $N\varnothing$
- [3] Clips for assembly of the flexible duct
- [4] Guides for inserting clips for wall/ceiling assembly
- [5] Knurling for assembly of the nozzle by means of clips
- [6] Nozzle

DIMENSIONS:

CODE	FOR NOZZLES [mm]	PLENUM DIMENSIONS A1xB1 [mm]	PLENUM DIMENSIONS AxB [mm]	PLENUM DIMENSIONS H [mm]	PLENUM DIMENSIONS H1 [mm]	PLENUM DIMENSIONS H2 [mm]	COLLAR Ø [mm]
PWC400008	233 x 133	102 x 201	125 x 223	160	110	50	125
PWC400009	333 x 133	102 x 301	125 x 323	160	110	50	160 - 200
PWC400010	433 x 133	102 x 401	125 x 423	160	110	50	160 - 200
PWC400011	333 x 183	152 x 301	175 x 323	160	110	50	160 - 200
PWC400012	433 x 183	152 x 401	175 x 423	160	110	50	160 - 200 - 250
PWC400013	533 x 183	152 x 501	175 x 523	160	110	50	160 - 200 - 250
PWC400014	633 x 233	202 x 501	175 x 523	160	110	50	200 - 250

ITEMS

CODE	DESCRIPTION
PWC400008	
PWC400009	
PWC400010	
PWC400011	
PWC400012	
PWC400013	
PWC400014	