

DATASHEET

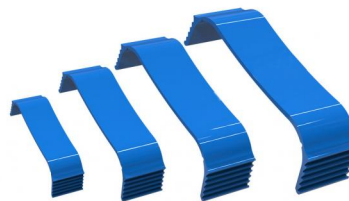
rev. 01 - 16/09/2022

MADE IN ITALY

BLOCK

Pipe stop for Excellens duct

11125016 - 11125017 - 11125018
SCD100122

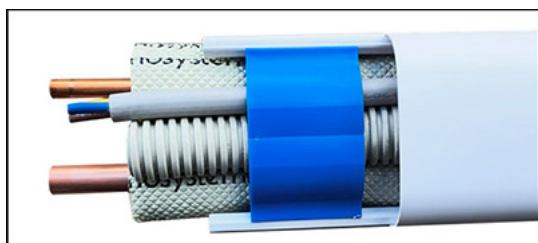


TECHNICAL SPECIFICATIONS:

- Made of PA6

CODE	MODEL
11125016	BLOCK T - 60
11125017	BLOCK T - 72
11125018	BLOCK T - 100
SCD100122	BLOCK T - 135

EXAMPLE OF INSTALLATION:



ITEMS

CODE	DESCRIPTION
11125016	"BLOCK" PIPE CLAMP FOR EXCELLENS AND OPTIMA TRUNKING T-60
11125017	"BLOCK" PIPE CLAMP FOR EXCELLENS AND OPTIMA TRUNKING T-72
11125018	"BLOCK" PIPE CLAMP FOR EXCELLENS AND OPTIMA TRUNKING T-100
SCD100122	"BLOCK" PIPE CLAMP FOR EXCELLENS AND OPTIMA TRUNKING T-135