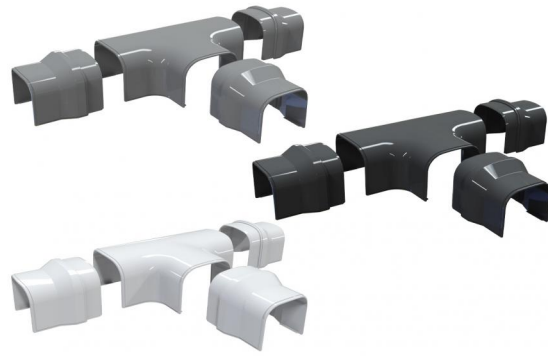


OPTIMA DT

"T" shunt

11106031 - 11106032 - 11106033
 SCD100118 - SCD100171 - SCD100172
 SCD100173 - SCD100223 - SCD100224
 SCD100225



TECHNICAL SPECIFICATIONS:

- Stiff, shockproof, anti-UVA PVC, white or grey, recyclable
- Innovative design
- Ultra-fast interlocking fastening system
- Extremely high outer finish
- Allows a wide bending radius of tubes
- Heat shrink barcode packaging
- Paintable
- Operating temperature -20°C / +60°C

MODELS AVAILABLE:



WHITE RAL 9010



GREY
 ANTRACITE RAL
 7016

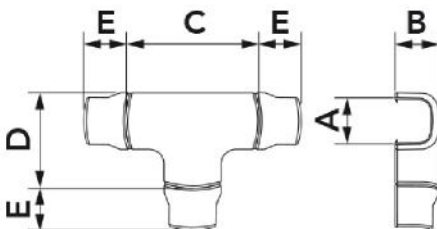
SPECIFICATIONS

DT 62-OPT composed of: DT 75-OPT and no. 3 reductions for ducts sized 62

DT 75-OPT composed of a "T" sized 75

DT 102-OPT composed of a "T" sized 102

DT 135-OPT composed of a "T" sized 135



DIMENSIONS

CODE	MODEL	A [mm]	B [mm]	C [mm]	D [mm]	E [mm]
11106031	DT 62 - OPT	66	48	180	130	60
11106032	DT 75 - OPT	78	58	180	130	--
11106033	DT 102 - OPT	104	68	210	160	--
SCD100118	DT 135 - OPT	140	84	270	205	--
SCD100171	DT 75 - OPT	78	58	180	130	--
SCD100172	DT 102 - OPT	104	68	210	160	--
SCD100173	DT 135 - OPT	140	84	270	205	--
SCD100223	DT 75 - OPT	78	58	180	130	--
SCD100224	DT 102 - OPT	104	68	210	160	--
SCD100225	DT 135 - OPT	140	84	270	205	--

ITEMS

CODE	DESCRIPTION
11106031	DT62-OPT - "OPTIMA DT" LINE T-BRANCH
11106032	DT75-OPT - "OPTIMA DT" LINE T-BRANCH
11106033	DT102-OPT - "OPTIMA DT" LINE T-BRANCH
SCD100118	DT135-OPT - "OPTIMA DT" LINE T-BRANCH
SCD100171	"OPTIMA DT" LINE T-BRANCH - ANTHRACITE GREY Mod. DT75-OPT
SCD100172	"OPTIMA DT" LINE T-BRANCH - ANTHRACITE GREY Mod. DT102-OPT
SCD100173	"OPTIMA DT" LINE T-BRANCH - ANTHRACITE GREY Mod. DT135-OPT
SCD100223	"OPTIMA DT" LINE T-BRANCH - BLACK - RAL 9005 - DT75-OPT
SCD100224	"OPTIMA DT" LINE T-BRANCH - BLACK - RAL 9005 - DT102-OPT
SCD100225	"OPTIMA DT" LINE T-BRANCH - BLACK - RAL 9005 - DT135-OPT