

SIRIO POINT

motorised butterfly damper for point system

11161854 - 11161855 - 11161856
11161857 - C11161863



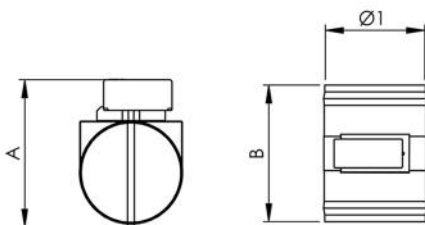
DESCRIPTION

The "Sirio" throttle dampers have an end-of-stroke micro contact, which indicates the opening and closing position of the throttle with a clean ON/OFF contact.

It integrates perfectly into new and existing ducted systems in which it is intended to manage only a part of the ducted system.

TECHNICAL SPECIFICATIONS:

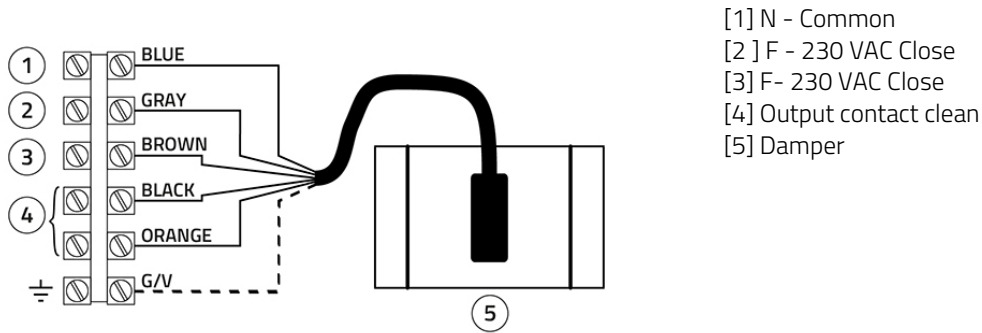
- Made from galvanised metal
- Butterfly opening from 0 to 90°
- Operating temperature 0°C to +70°C
- Includes motor (220 V power supply)
- Option of management by means of: wall/built-in regulator, with deflector, with thermostats.



DIMENSIONS

CODE	A [mm]	B [mm]	Ø1 [mm]
11161854	190	154	120
11161855	220	154	150
11161856	270	154	200
11161857	320	154	250

WIRING CONNECTION DIAGRAM



ITEMS

CODE	DESCRIPTION
11161854	ELECTRIC BUTTERFLY DAMPER FOR 230 V POINT-TO-POINT SYSTEM Ø 120
11161855	ELECTRIC BUTTERFLY DAMPER FOR 230 V POINT-TO-POINT SYSTEM Ø 150
11161856	ELECTRIC BUTTERFLY DAMPER FOR 230 V POINT-TO-POINT SYSTEM Ø 200
11161857	ELECTRIC BUTTERFLY DAMPER FOR 230 V POINT-TO-POINT SYSTEM Ø 250
C11161863	