

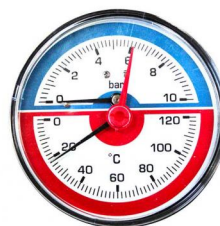
# DATASHEET

rev. 00 - 28/11/2022



## Ø 80 thermomanometer with rear coupler

20000650 - 20000660



### TECHNICAL SPECIFICATIONS:

- ABS case and dial
- Plastic glass (Lustran)
- Class 1.6
- Copper alloy spring
- Red reference needle
- Includes 1/4" F x 1/2" M check valve
- Operating temperature -20°C to +120°C

### TECHNICAL DATA

CODE	SCALE [bar/°C]
20000650	0-6-0/120°C
20000660	0-10-0/120°

### ITEMS

CODE	DESCRIPTION
20000650	THERMOMANOMETER Ø 80 WHIT REAR CONNECTION, SCALE 0-6-0/120°
20000660	THERMOMANOMETER Ø 80 WHIT REAR CONNECTION, SCALE 0-10-0/120°