

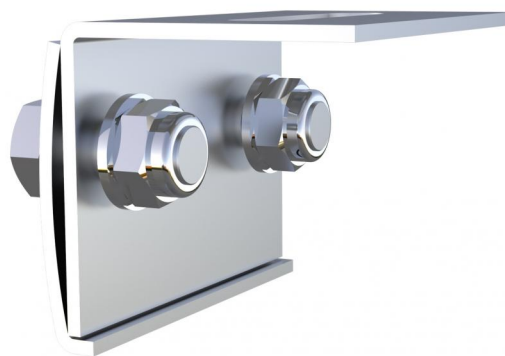
FICHES TECHNIQUES

rev. 00 - 05/04/2024

HSMLA

support de serrage pour tôles serties

11110730 - 11110730BOX



CARATTERISTICHE TECNICHE:

- Materiale: acciaio inox AISI 304
- Completa di vite TE M8 x 20, rondella e dado M8 auto bloccante
- In acciaio inox A2

ARTICLES

CODE	DESCRIPTION
11110730	SUPPORT A ETAU POUR PANS AGRAFEES HSMLA
11110730BOX	