

SCHEMA TECNICA

rev. 00 - 29/11/2022

Barilotto M / M

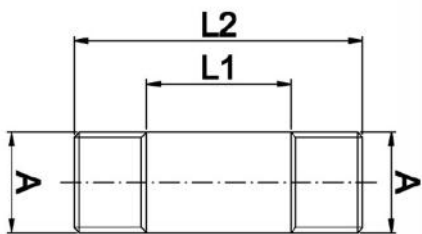
26004500 - 26004510 - 26004520
26004530 - 26004540 - 26004550
26004560 - 26004570 - 26004580
26004590 - 26004600 - 26004610
26004620 - 26004630 - 26004640
26004650 - 26004660 - 26004670
26004680 - 26004690 - 26004700



CARATTERISTICHE TECNICHE:

Realizzato in ottone

- Applicazione per idraulica
- Filettatura gas
- Temperatura max di utilizzo +130°C



DIMENSIONI

CODICE	A	L1 [mm]	L2 [mm]
26004500	1/2"	30	60
26004510	1/2"	50	80
26004520	1/2"	70	100
26004530	1/2"	120	150
26004540	1/2"	170	200
26004550	1/2"	220	250
26004560	1/2"	270	300
26004570	3/4"	--	60
26004580	3/4"	--	80
26004590	3/4"	--	100
26004600	3/4"	--	150
26004610	3/4"	--	200
26004620	3/4"	--	250
26004630	3/4"	--	300
26004640	1"	--	60
26004650	1"	--	80
26004660	1"	--	100
26004670	1"	--	150
26004680	1"	--	200
26004690	1"	--	250
26004700	1"	--	300

ARTICOLI

CODICE	DESCRIZIONE
26004500	BARILOTTO 1/2" L.60
26004510	BARILOTTO 1/2" L.80
26004520	BARILOTTO 1/2" L.100
26004530	BARILOTTO 1/2" L.150
26004540	BARILOTTO 1/2" L.200
26004550	BARILOTTO 1/2" L.250
26004560	BARILOTTO 1/2" L.300
26004570	BARILOTTO 3/4" L.60
26004580	BARILOTTO 3/4" L.80
26004590	BARILOTTO 3/4" L.100
26004600	BARILOTTO 3/4" L.150
26004610	BARILOTTO 3/4" L.200
26004620	BARILOTTO 3/4" L.250
26004630	BARILOTTO 3/4" L.300
26004640	BARILOTTO 1" L.60
26004650	BARILOTTO 1" L.80
26004660	BARILOTTO 1" L.100
26004670	BARILOTTO 1" L.150
26004680	BARILOTTO 1" L.200
26004690	BARILOTTO 1" L.250
26004700	BARILOTTO 1" L.300